



Lexus Egypt

Automotive park - Cairo Festival City - Fifth Settlement - Cairo - Egypt

Tel.: +2 02 618 5900 Fax: +2 02 618 5999

☎ 16550

  LexusEgypt

www.Lexus.com.eg









22-way power rear seats and power ottoman

The power rear seats use motors and a newly-developed pneumatic system that inflates and deflates air bladders to make fine-grained adjustments to every aspect of the seats. The rear seat behind the front passenger's seat has a maximum 1020mm of foot room and a power ottoman that provides generous support to the lower legs so the occupant can relax in refined comfort. In addition, three position presets allow the occupant to choose their preferred posture. "Business" is the normal position. "Entertain" reclines the seatback to a relaxing angle and positions the front passenger's seat for optimal viewing of the rear seat display. "Relax" moves the front passenger's seat to the forward-most position and deeply reclines the rear seatback to optimize the rear seat space.



Rear multi-operation panel

The multi-operation panel in the rear center armrest puts intuitive control of the audio, air-conditioning, seat and relaxation functions, sunshades and lighting at your fingertips.

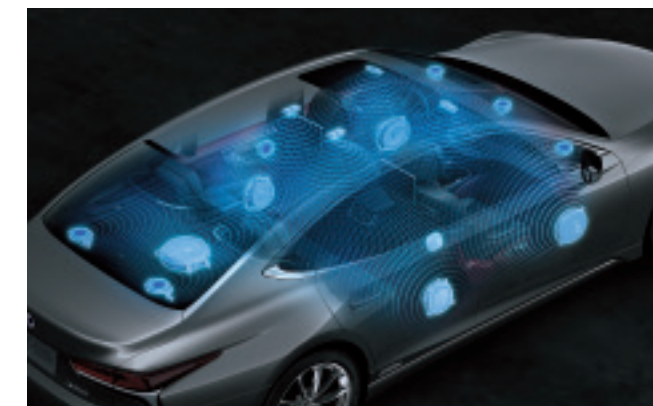
Rear seat entertainment system

The rear seat entertainment system includes 11.6-inch displays that automatically adjust with the seat position to maintain an excellent angle for easy viewing, a Blu-ray Disc player, SD card slot, and a HDMI jack that enables the connection of a computer or other devices. Rear seat passengers can also enjoy videos, music and other media stored on mobile devices using Miracast or DLNA (Digital Living Network Alliance).



Mark Levinson QLI Reference Surround Sound System

This newly-developed 16-channel 3D surround sound system drives 23 speakers. The 7 Unity speakers, ceiling speakers and QLI (Quantum Logic Immersion) surround technology fill the cabin with uniform sound quality, enveloping the listener in natural realistic sound with the precise positioning of a live sound stage, excellent separation and dynamic reproduction of sound sources.



Lexus LS Premium Sound System

12 speakers reproduce rich, powerful bass together with realistic vocals. Advanced processing technology corrects for excessive bass and produces clear sound even at low volume.

Relaxation seats with warming function (Outboard rear seats)

Air bladders integrated into the seat cushion and seatback are inflated to apply pressure to the occupant's back and thighs. The system also utilizes dedicated heaters to promote relaxation through repeated warming and cooling. A total of seven programs for both the entire body (Full Body Refresh, Full Body Stretch and Full Body Simple) and specific parts of the body (Upper Body, Lower Body, Shoulder and Lumbar) can be selected.



Power sunshades (Rear doors, rear quarter windows and rear window)

The rear window sunshade covers the entire window on both sides with no gaps. Operation of the rear

quarter window sunshades is linked with the rear door window sunshades to provide comfort and privacy in the rear seats.



Cool box

Air chilled by the rear cooler in the trunk space circulates through the cool box to keep items cool. Cool air vents allow the airflow to be switched on and off as required.

EXTERIOR

Expressing the design concept "Sensual Aggressive", the exterior fuses sensual beauty with the low center of gravity of a refined platform to generate anticipation of dynamic driving performance, endowing a unique presence that delivers the style and personality befitting a flagship sedan.



INTERIOR

Designed around the concept "Progressive Comfort", the interior combines a cockpit for focused concentration on driving with exquisite relaxation befitting an exceptional luxury sedan. The highly refined features and finish that evoke the aesthetic beauty of Japanese crafts, imbue a unique interior that appeals to sophisticated sensibilities.



EXTERIOR & INTERIOR
COLORS

The LS's "Effect of Element" color design concept is expressed in a richly varied worldview that complements pleasing variations in the shape of the exterior and interior with elements such as colors, material textures, three-dimensional finishes and lighting. Enjoy the pinnacle of refinement made possible by a tapestry of colors and materials.



Sonic Quartz <085>



Sonic Silver <1J2>



Sleek Ecu Metallic <4U7>



Amber Crystal Shine <4X2>



Sonic Titanium <1J7>



Manganese Luster <1K2>



Deep Blue Mica <8X5>



Black <2I2>



Graphite Black Glass Flake <223>



Red Mica Crystal Shine <3R1>



Sonic Agate <3U3>



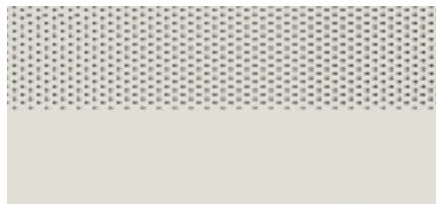
20-inch aluminum wheels

<L-ANILINE>



Camel

<SEMI-ANILINE LEATHER >



White



Crimson & Black/Black

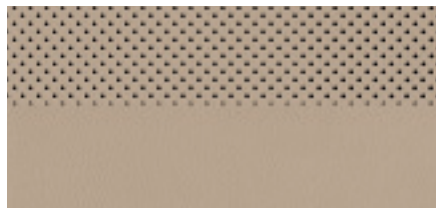


Ivory



Topaz Brown

<SMOOTH LEATHER>

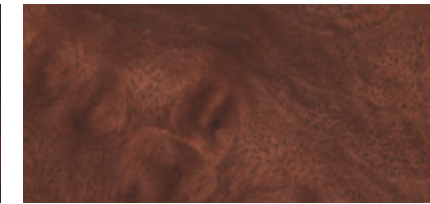


Ivory

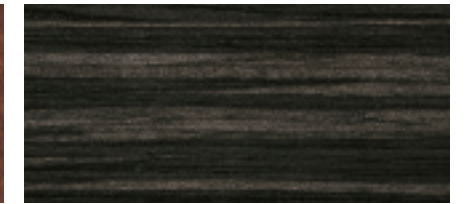
<TRIM>



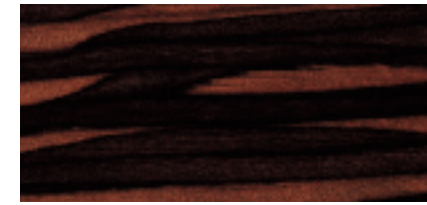
Walnut (Gross)



Walnut (Open Pore)



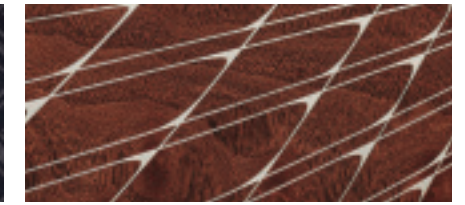
Shimamoku



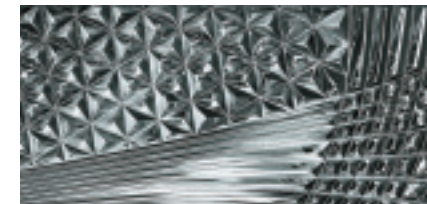
Art Wood (Organic)



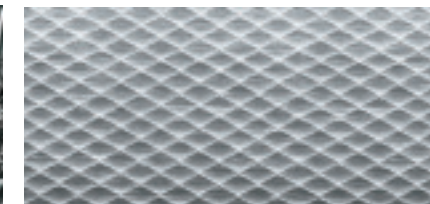
Art Wood (Herringbone)



Laser Cut Special



Kiriko (Cut Glass)



Naguri-style Aluminum

	Semi-aniline Leather (Executive model)		Semi-aniline Leather (Luxury model)				Smooth Leather
	L-Aniline (Executive model)	Semi-aniline Leather (Executive model)	White	Black	Ivory	Topaz Brown	Ivory
Walnut (Gross)	-	●	-	●	-	-	-
Walnut (Open Pore)	●	-	-	-	-	●	●
Shimamoku	-	-	-	●	-	-	-
Art Wood (Organic)	-	●	-	●	-	-	-
Art Wood (Herringbone)	-	-	●	-	-	-	-
Laser Cut Special	●	-	-	-	-	-	-
Kiriko (Cut Glass)	-	-	●	-	-	-	-
Naguri-style Aluminum	-	-	-	-	-	-	-

●: Available combination.

MAIN FEATURES

EXTERIOR

- Windshield green glass; IR (Infra-red Rays)-cut
- Front door, rear door and rear quarter window glass; acoustic glass, IR-cut
- Rear glass; green glass.
- Moonroof; power tilt/slide, one-touch mode with jam protection system
- Door mirrors; LED side turn signal lamp, auto folding, heater, electric
- Door handles; foot area illumination
- Air suspension + AVS (Adaptive Variable Suspension)

INTERIOR

- Color TFT (Thin Film Transistor) multi-information display
- Large color head-up display (24-inch)
- Premium wood and leather steering wheel
- Analog clock
- Power rear side and rear quarter window sunshades
- EC Inside Rear-View Mirror
- Center console box
- Cupholders (Front and outboard rear seats)
- Door pockets (All doors)
- LED interior lighting system
- Auto air conditioning system; 4-zone independent temperature controls, (Front and outboard rear seats)
- Lexus Climate Concierge
- Rear Cool Box
- LED Logo Illumination FR + RR

OPERATION

- Power tilt and telescopic steering column; auto-away/auto-return function with memory
- Steering wheel control switches
- Drive mode select "ECO & Normal & Sport + Comfort & Sport + & Custom Mode"
- Position memory switches (Front seats); 3-memory
- EPS (Electric Power Steering)
- Cruise Control
- Smart Entry & Start System
- Panoramic View Monitor
- Rain sensor
- Parking sensors
- Auto and Easy Door closer
- Power trunk lid; easy closer + Kick motion sensor
- Power Door Lock "Speed + 2-Turn"

NAVIGATION AND AUDIO

- 12.3-inch EMV (Electro Multi-Vision) display; Remote Touch Interface
- Mark Levinson QLI (Quantum Logic Immersion) Reference Surround Sound System; AM/FM radio, in-dash DVD player, 23 speakers, MP3 and WMA play compatible, DSP, ASL, Clari-Fi
- Rear seat entertainment system; 11.6-inch IPS (In-Plane-Switching)-LCD displays, HDMI jack, microSD or microSDHC card, 2 headphone jacks, wireless remote control, Blu-ray Disc player, Miracast
- Bluetooth function; hands-free calling, wireless connection with AV-profile compliant player
- 2 USB ports/mini-jack
- Active Noise Control

SEATS

- 28-way power front seats "3 Memory"
- Power easy access system (D)
- Seat heater (Front and Rear seats)
- Ventilated Seats (Front and Rear seats)
- Ottoman with expansion mechanism (Rear seat behind the front passenger's seat)
- Relaxation seats (Outboard rear seats)
- Front seat slide, D "260 mm", P "420 mm"
- Seats Lumber Support "Front and Rear :4 way, PELVIC"

SAFETY

- VDIM (Vehicle Dynamics Integrated Management)
- TRC (Traction Control System)
- VSC (Vehicle Stability Control)
- ABS (Anti-lock Brake System)
- Brake Assist system
- Brake Hold
- Hill-start Assist Control
- EPB Electric Parking Brake
- 3-eye Bi-Beam LED headlamps; Auto-Leveling System
- Auto Light Control System
- LED sequential turn signal lamps
- LED DRL (Daytime Running Lamp)
- LED cornering lamps
- LED Front Fog Lamps
- LED rear fog lamps
- Headlamp Cleaner
- Automatic anti-glare mirrors (Interior and door mirrors)
- Dual-stage SRS (Supplemental Restraint System) airbags (Front seats)
- SRS knee airbags (Front seats)
- SRS side airbags (Front and outboard rear seats)
- SRS curtain shield airbags (Front and rear door windows)
- SRS seat cushion airbags (Outboard power rear seats)
- 3-point ELR seatbelts (All seats)
- Pretensioners and force limiters (Front and outboard rear seats)
- Anchor bars for fixing ISOFIX-compliant child seat (Outboard rear seats)
- CRS (Child Restraint System) top tether anchors (Outboard rear seats)
- Security system; alarm, immobilizer system
- AL-TPWS (Auto Location-Tire Pressure Warning System)
- 4-point pop-up hood

SPECIFICATIONS

DIMENSIONS & WEIGHT

Overall length:	5235mm
Overall width:	1900mm
Overall height:	1450mm
Wheelbase:	3125mm
Tread: Front	1630mm
Rear	1635mm, 1615mm
Curb weight:	2105-2290kg
Gross vehicle weight:	2670kg

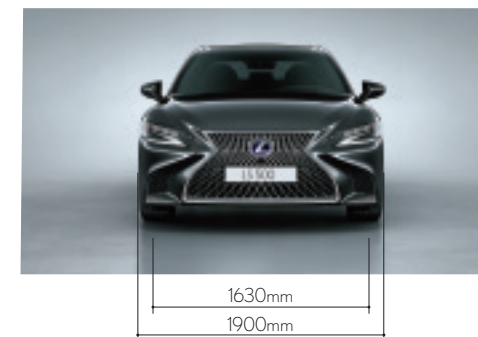
CHASSIS

Suspension (Front/Rear):	Multi-link type, air springs, gas-filled shock absorbers, stabilizer bar
Steering system:	Rack and pinion with electric power assist.
Brakes: Front	400mm ventilated discs
Rear	359mm ventilated discs
Minimum turning radius (Tires):	5.7m
Fuel tank capacity:	82 liters
Tires: Front	245/45RF20
Rear	245/45RF20

Minimum Running Ground Clearance (Curb Weight) 144 mm

ENGINE

Type:	3.5-liter V6 Four Cam 24-valve, twin turbochargers
(V35A-FTS, unleaded)	
Piston displacement:	3444cc
Max. output:	415HP/6000rpm (EEC net)
Max. torque:	600 nm/1600-4800rpm (EEC net)
Fuel system:	D-4ST (Direct injection 4 stroke gasoline engine Superior version with Turbo) EFI (Electrical Fuel Injection)



- Addition of extra features may change figures in this chart.

- Toyota Motor Corporation reserves the right to alter any details of specifications and equipment without notice.

Details of specifications and equipment are also subject to change to suit local conditions and requirements.

Please inquire at your local dealer for details of any such changes that might be required for your area.

Note: Vehicles pictured and specifications detailed in this catalog may vary from models and equipment available in your area.

- Vehicle body color might differ slightly from the printed photos in this catalog.