

ALL-NEW PEUGEOT 3008 SUV



Dealer Stamp

Création : Extrême Muse - Réalisation / Édition : Gutenberg Networks -
Automobiles Peugeot RC Paris B 552 144 503 - Printed in the EU - MCP 3829 - November 2016-V2

peugeot.co.uk





Welcome to the world of PEUGEOT, a world of innovative French manufacturing tradition. Our journey started over 200 years ago with a steel foundry producing a diverse range of products from coffee grinders to saws.

Our pursuit for innovation led to the production of our first motorised vehicle in 1889, the Serpollet-Peugeot – a steam-powered three-

wheeler. Our quest for perfection is what drives us, just as it did over 200 years ago.

All of our expertise gained through the years has led to this point, introducing the all-new PEUGEOT 3008 SUV, over 200 years in the making.

06	Design	32	Practicality
12	PEUGEOT i-Cockpit®	34	Efficiency
18	Interior Features	36	Accessories
22	Advanced Grip Control®	38	Personalisation
26	Safety		

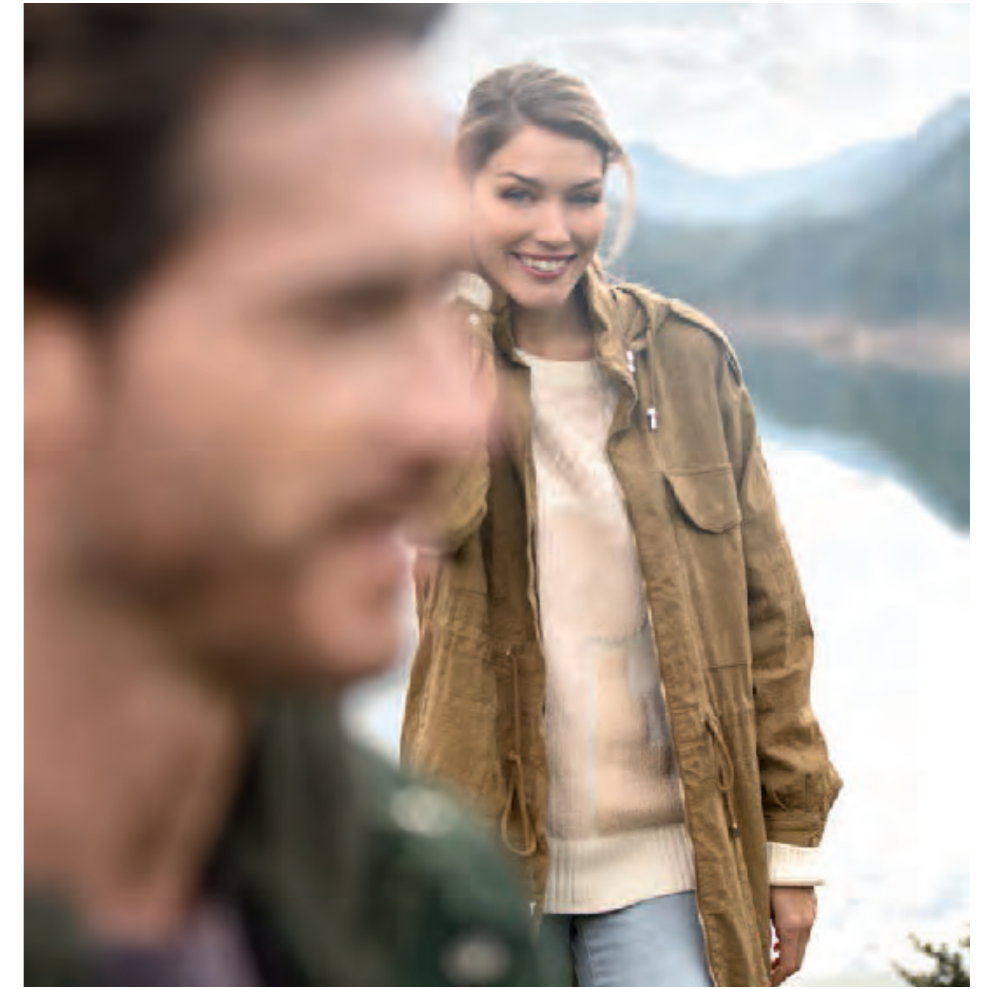
EXPERIENCE BUILT IN.





INSPIRED STYLE.

Arrive in style with the all-new PEUGEOT 3008 SUV with an exterior providing the perfect balance of character and strength that makes an accomplished SUV. Discover the striking front end design featuring a prominent chrome grille flanked either side by signature headlights featuring LED daytime running light technology. Further details, a raised horizontal bonnet and contrasting wheel arch extension trim, add further to the SUV design. Go a step further with Allure versions and enjoy a front bumper adorned with a scuff plate finished in distinctive 'Lion Grey'.



MAKE A STATEMENT.

To stand back and admire the all-new PEUGEOT 3008 SUV allows the full appreciation of this striking SUV. With a purposeful stance and raised ride height the all-new PEUGEOT 3008 SUV makes its intentions clear. The impactful design theme showcased at the front of the car continues in profile. With a strong shoulder line that builds towards the rear and striking details such as the unique satin steel roof arch trim, for those who want to make a statement, here is the answer.



MADE FOR ADVENTURE.

With the all-new PEUGEOT 3008 SUV, every journey will be an adventure no matter the distance. Whilst many an SUV are commandeered by urban explorers, if your destination is off the beaten track, the all-new PEUGEOT 3008 SUV will take it in its stride. The optional Advanced Grip Control® with Hill Assist Descent Control with its five driving modes will allow your journeys to continue, even off the tarmac.



THE STRIKING DESIGN CONTINUES.

At the rear of the all-new PEUGEOT 3008 SUV, the design comes together beautifully. The striking front end design and strong shoulder in profile build to a perfectly balanced rear. Signature PEUGEOT design touches include 'Claw Effect' LED lights that flank the gloss black rear cluster connecting strip and a chrome rear bumper fascia to further enhance the design.

Model shown is all-new PEUGEOT 3008 SUV Allure with optional Black Diamond roof, Advanced Grip Control®, aluminium longitudinal roof bars and Sunset Copper metallic paint.

CONQUER THE OPEN ROAD.





AMPLIFIED EMOTIONS.

Increase your senses tenfold on board the all-new PEUGEOT 3008 SUV. With its spectacular new PEUGEOT i-Cockpit®, the all-new PEUGEOT 3008 SUV invites you to explore a 100% digital world. The 8.0" capacitive touchscreen with smartphone levels of responsiveness, configurable 12.3" head-up digital instrument panel which can be personalised to suit the drivers needs and the compact sports steering wheel with integrated controls are guaranteed to enhance your driving experience. To accompany the new PEUGEOT i-Cockpit®, versions equipped with an Efficient Automatic Transmission (EAT6) are operated by the stylish electric impulse control.



A TOUCH OF PERFECTION.

Every detail of the new PEUGEOT i-Cockpit® has been designed following a meticulous approach, from the full-grain leather trimmed steering wheel to the soft touch 'Brumeo' fabric that adorns the door cards and dashboard fascia, no detail has been overlooked. To complement the 8.0" capacitive touchscreen satin chrome toggle switches inspired by the world of aviation provide a unique touch to the striking cockpit design, with perfect weighting and damping, each switch is a work of art.



HIGH-DEFINITION DRIVE.

Welcome to the 21st Century, taking your seat behind the wheel in the all-new PEUGEOT 3008 SUV, allows you to fully appreciate the configurable 12.3" head-up digital instrument panel. Featuring crisp graphics, this large display can be customised to provide a variety of display modes. Modes include a traditional 'dials' selection, similar to the traditional analogue style. Other modes include the 'Driving' selection as shown above, whereby driver assistance information takes centre stage allowing the dials to take on a 'roller' appearance. In addition a further 3 modes are available, 'Personal,' 'Minimal' and 'Navigation'*.

* Allure versions only.



A COMMANDING VIEW.

With its raised ride height the all-new PEUGEOT 3008 SUV will give you a commanding view of the road ahead from the comfort of the new PEUGEOT i-Cockpit®. Designed with the driver in mind, it's the small details that make the biggest difference. Take the compact sports steering wheel, low set to reduce arm fatigue whilst the dimensions heighten the sense of agility in the bends. To add to the 'cockpit' design the touchscreen and toggle switches have been angled towards the driver whilst the configurable 12.3" head-up digital instrument panel is positioned above the steering wheel, closer to the road reducing the distance your eyes travel to view key information.



AMPLIFIED EXPERIENCE.

SIT BACK AND DELIGHT YOUR SENSES.

Journeys will never be the same again, with the all-new PEUGEOT 3008 SUV immersing you in true luxury. Enjoy a relaxing driver seat multipoint massage* with five massage types conducted through eight-pocket pneumatic technology. Experience more of the world outside with the opening panoramic glass roof** complete with mood lighting or appreciate the acoustics from the high-fidelity Focal® Hi-fi speaker system*, with its 515 watt amplification for optimum sound quality.





MIRROR SCREEN® FUNCTIONALITY.

To ensure seamless compatibility between your smartphone and all-new PEUGEOT 3008 SUV every model benefits from Mirror Screen® functionality. Mirror Screen® encompasses Apple CarPlay™, MirrorLink® and Android Auto* technologies. With a compatible device you will be able to enjoy key features from your smartphone mirrored onto the 8.0" capacitive touchscreen. In addition to charging via USB, a smartphone charging plate** can also be specified to allow wireless inductive charging on the move.

*The Mirror Screen® function operates, as appropriate, via MirrorLink® technology (for MirrorLink®-compatible Android, Blackberry and Windows phones), via Apple CarPlay™ (for iOS phones) or via Android Auto (for Android phones) subject to holding a telephone subscription including Internet access with the user's operator. For more information, visit peugeot.co.uk for more details.

** Optional on Active and Allure versions - Induction charging for devices compatible with the Qi standard.



CONNECTED 3D NAVIGATION.

Navigating has never been easier thanks to the new Connected 3D Navigation system available on the all-new PEUGEOT 3008 SUV. Standard from Allure versions upwards, the navigation display can be viewed either on the 8.0" touchscreen or 12.3" head-up digital instrument panel. Using a live feed, the events essential to driving (traffic, weather, parking, service stations) are displayed in real time using TomTom® service connectivity. In addition the system also includes European mapping, 3D city mapping, full postcode lookup and voice recognition to allow for the input of address details.



ADVANCED GRIP CONTROL*.

With its compact sports steering wheel, the all-new PEUGEOT 3008 SUV has the agility for everyday commuting, when the terrain gets a bit tougher however, the all-new PEUGEOT 3008 SUV has the perfect solution in the form of Advanced Grip Control®*. With one action on the thumbwheel on the centre console, your grip mode adapts instantly to the most difficult conditions with some of the five settings on offer including Mud, Sand and Snow. Advanced Grip Control® provides the perfect alternative to the more traditional 4x4 systems which often add more weight to a vehicle reducing the overall efficiency.



HILL ASSIST DESCENT CONTROL

Designed to assist with the descent of steep slopes, Hill Assist Descent Control is incorporated as part of the Advanced Grip Control® system. When descending a slope with a gradient of more than 5% and with vehicle speed below 19mph the system will work to reduce the risk of slipping. During a descent the system maintains speed and brake control, allowing the driver to concentrate on the vehicle's path of travel during the manoeuvre. A clever feature incorporated within the Hill Assist Descent Control system is our unique 'Clutch Mode' security function. Selecting this function for very steep slopes regulates the vehicle speed to 2mph (3km/h), this allows the vehicle to creep down a steep slope in a completely controlled manner.

THE PINNACLE OF SAFETY.





ALWAYS GOT YOUR BACK.

Featuring outstanding levels of standard safety equipment and driver assistance systems, the all-new PEUGEOT 3008 SUV will provide optimum safety for you and those dearest to you. Every all-new PEUGEOT 3008 SUV enjoys three sets of Isofix mounting points, six airbags including full length curtain and tyre pressure sensors.

In addition to assist the driver, automatic emergency braking with pedestrian detection, driver attention alert, distance alert, lane departure warning and a traffic sign recognition and recommendation system also feature as standard.

In recognition of this, all-new Peugeot 3008 SUV was awarded a five star rating - the highest rating possible - from Euro NCAP, the most widely-recognised independent vehicle safety assessor in Europe, following extensive and rigorous crash testing.

ADVANCED DRIVER ASSISTANCE SYSTEMS.

Featuring class-leading levels of advanced driver assistance systems, the all-new PEUGEOT 3008 SUV Allure versions and upwards benefit from a host of systems designed to assist the driver on the open road. These systems include Active Blind Spot Detection which alerts the driver to an obstacle via an LED in the mirrors as well as applying a trajectory correction to the steering, should the driver not notice an obstacle. Other standard assistance systems from Allure upwards include Active Lane Keeping Assistance, Advanced Driver Attention Alert and PEUGEOT Smartbeam Assistance.

In addition the all-new PEUGEOT 3008 SUV Allure versions and upwards benefit from PEUGEOT Connect SOS and Assistance. A vehicle locating communication unit, this feature can be used manually (dedicated SOS button on the console) or automatically (if pyrotechnic devices are deployed). It locates the vehicle precisely and triggers the sending of the appropriate emergency services for a rapid response.

PEUGEOT are the pioneers of this technology, since launching in 2003 PEUGEOT Connect SOS & Assistance has assisted over 7,000 individuals. The SOS system is subscription free with no additional charges and uses a GPS module and SIM card (built in to the system).



OUTSTANDING PRACTICALITY.





AS IF BY MAGIC.

Hands full? Watch the ingenious Smart electric tailgate* open and close, making it easy to load all your objects. All it takes is a swift foot motion under the bumper centre to activate it... and make life easier. This clever option also includes the innovative PEUGEOT Open and Go* system, a system that incorporates keyless entry and push-button start, relieving the need to remove the key from your pocket.



CREATE YOUR OWN SPACE.

Create your own in-car space, at the single pull of the quick release lever (located in the boot), the rear seats fold to give a flat load area for easy loading. With the rear seats folded the total storage volume grows to 1670 litres. A ski flap also features and for increased modularity the front passenger seat folds completely flat*. In doing so this increases the loading length to three metres, perfect for transporting lengthy items.



1.6L BlueHDi 120 S&S

Gearbox	6-speed manual
Maximum Torque	300Nm @ 1750
0-62mph	11.2 seconds
Urban Drive Cycle MPG (L/100 km)	60.1 (4.7)
Extra Urban Drive Cycle MPG (L/100 km)	80.7 (3.5)
Combined Drive Cycle MPG (L/100 km)	70.6 (4.0)
Carbon Dioxide Emissions CO ₂ (g/km)	104

Please note figures above are for vehicles without Advanced Grip Control®. For full technical specification details please consult the all-new PEUGEOT 3008 SUV price and specification guide on peugeot.co.uk

BlueHDi

The all-new PEUGEOT 3008 SUV's BlueHDi Euro 6* diesel engines combine high performance and reduced emissions. With an exclusive combination of SCR (Selective Catalytic Reduction) and an additive DPF (Diesel Particulate Filter), BlueHDi engines reduce fuel consumption while restricting emissions to between 103 and 124 g/km of CO₂, reducing the emission of nitrogen oxides (NOx) by up to 90% and eliminating 99.9% of fine particles. Available in 100hp, 120hp, 150hp and 180hp outputs dependent on trim level.

* According to EU acceptance.



1.2 L PureTech 130 S&S

Gearbox	6-speed manual
Maximum Torque	230Nm @ 1750
0-62mph	10.8 seconds
Urban Drive Cycle MPG (L/100 km)	47.1 (6.0)
Extra Urban Drive Cycle MPG (L/100 km)	62.8 (4.5)
Combined Drive Cycle MPG (L/100 km)	55.4 (5.1)
Carbon Dioxide Emissions CO ₂ (g/km)	117

Please note figures above are for vehicles without Advanced Grip Control®, for full technical specification details please consult the all-new PEUGEOT 3008 SUV price and specification guide on peugeot.co.uk

PureTech

The all-new PEUGEOT 3008 SUV's 3-cylinder PureTech Euro 6* petrol engines are more efficient thanks to their reduced weight and size. They give you a unique driving pleasure and high-level performance, without compromising on reliability and robustness. The 1.2-litre PureTech 130 S&S engine was voted Engine of the Year 2015, 2016 and 2017 in its category** and displays emissions from 117 g/km of CO₂. It can be combined with the EAT6 automatic gearbox.

* According to EU acceptance.

** 1.0L - 1.4L Category

ACCESSORISE YOUR ALL-NEW PEUGEOT 3008 SUV.

Whatever your destination and your way of life, a wide variety of accessories are available to make the all-new PEUGEOT 3008 SUV your own.

1. Set of deep piled carpet mats
2. Chrome-plated door mirror shells
3. Towbar mounted cycle carrier
4. GT aluminium pedals and foot rest
5. Wind deflectors
6. Roof bar ski rack



YOUR STYLE - YOUR CHOICE.

From soft fabrics with intricate stitch detail to full grain leather trim, every seat material has been carefully chosen to provide style, durability and comfort.

- 1. Claudia Mistral leather* (optional on Allure versions)
- 2. 'Meco' cloth (standard on Active versions)
- 3. 'Piedimonte' leather effect and cloth (standard on Allure versions)

*Some surfaces contain artificial leather



SET THE TONE.

Choose the colour that matches your character from the nine in our colour range.

* Standard
** Optional



Hurricane Grey* (Solid)



Bianca White** (Solid)



Cumulus Grey** (Met)



Amazonite Grey** (Met)



Nero Black** (Met)



Ultimate Red** (Special)



Pearl White** (Pearlescent)



Magnetic Blue** (Met)



Sunset Copper** (Met)

ROLL IN STYLE.

Designed to complement the sharp exterior design, the all-new PEUGEOT 3008 SUV is available with a choice of alloy wheels in either painted or two-tone diamond-cut finishes.

*Optional on Active versions
**Optional on Active and Allure versions



17" 'CHICAGO' alloy
(standard on Active versions)



18" 'DETROIT'
Two-tone diamond-cut alloy wheels*
(standard on Allure versions)



18" 'LOS ANGELES'
Two-tone diamond-cut alloy wheels**
(linked to Advanced Grip Control®)



19" 'WASHINGTON'
Two-tone diamond-cut alloy wheels
(optional on Allure versions)

NETWORK AND SERVICES

When you choose PEUGEOT, you have the reassurance of knowing that your vehicle has been designed and built to give you years of worry free motoring. As a PEUGEOT owner, you can also rely on the customer care services of your dealer. This will ensure that you're talking to a specialist who'll listen to you, understand your problems and respond efficiently - someone who also has the expertise to maintain your PEUGEOT correctly, using trained technicians, PEUGEOT diagnostic equipment and PEUGEOT original parts.

FOR YOUR PEACE OF MIND

MANUFACTURER WARRANTY

Any all-new PEUGEOT 3008 SUV first registered in the UK and purchased from a UK PEUGEOT Dealer will benefit from a 2 year unlimited mileage manufacturer warranty and a free optional additional year of warranty (up to 60,000 miles) provided by the PEUGEOT Dealer Network. At the end of the 3 year warranty period (or after 60,000 miles) you have the option to purchase a PEUGEOT Platinum Extended Warranty. Our cars also come with a 12 year Anti-Perforation and 3 year Paint Warranty (6 and 2 years on vans). For full terms and conditions on all of these, please contact your PEUGEOT Dealer.

PEUGEOT ASSISTANCE

All new PEUGEOT's come with 12 months of PEUGEOT Assistance - our breakdown assistance service. This covers all incidents involving vehicle based

faults for you and anyone else driving your car with your permission. It is available 24 hours a day, 365 days a year. PEUGEOT Assistance includes European cover, homestart, roadside assistance, vehicle recovery and a free replacement car or accommodation if required. It can be extended for a further 12 months, or 24 months, and to protect you against non-vehicle faults (such as punctures) at specially discounted rates, by calling 0870 752 7050.

PEUGEOT SERVICE CARE

Please refer to the maintenance book for details of the service intervals and the specifics of vehicles operating in arduous conditions.

FINANCE - LET THE SPECIALISTS HELP

PSA Finance UK Limited offer a range of flexible finance plans to make owning a new PEUGEOT easy. As specialists, we will provide choice, convenience and flexibility. Written quotations are available on request from PSA Finance UK Limited, Quadrant House, Princess Way, Redhill, RH1 1QA. Over 18s only, a guarantee may be required.

FURTHER INFORMATION

PEUGEOT INSURANCE

Designed for PEUGEOT to offer tailored cover at a competitive price. In the event of an accident, a PEUGEOT Approved Accident Repair Centre will repair your car, using PEUGEOT original parts and offer a courtesy car (subject to availability). Call PEUGEOT Insurance for a quote on 0370 024 1107. (Calls may be recorded). PEUGEOT Insurance is underwritten by UK Insurance Limited.

PEUGEOT ACCESSORIES

PEUGEOT Accessories are designed specifically for each model meaning no compromises on fit or function.

In addition they are tested to a rigorous standard for complete confidence and peace of mind.

PEUGEOT AND THE ENVIRONMENT

Our website has details of PEUGEOT's environmental and recycling policies.

ABOUT THIS BROCHURE

The information contained in this brochure is based on the data and images available at the time of printing. Some features may not be available in the UK and some photography may feature left hand drive models. As part of a policy of continuous specification

improvement, PEUGEOT reserves the right to modify specification, options and colours at any time. For full details ask your PEUGEOT Dealer, or click on peugeot.co.uk. Print and photographic processes used in this brochure may alter the depth and tone of the colours shown.

This brochure is not a contractual document or offer of sale.

The details in this brochure cannot be reproduced without the expressed authorisation of PEUGEOT.

Issued by:

Sales and Marketing,
PEUGEOT Motor Company plc.,
Pinley House, 2 Sunbeam Way,
Coventry, CV3 1ND.

