

# NEW RANGE ROVER EVOQUE



ABOVE & BEYOND





BY APPOINTMENT TO  
HM THE QUEEN  
MANUFACTURERS OF  
MOTOR VEHICLES  
JAGUAR LAND ROVER LIMITED  
COVENTRY



BY APPOINTMENT TO  
HRH THE DUKE OF EDINBURGH  
MANUFACTURERS OF  
MOTOR VEHICLES  
JAGUAR LAND ROVER LIMITED  
COVENTRY



BY APPOINTMENT TO  
HRH THE PRINCE OF WALES  
MANUFACTURERS OF  
MOTOR VEHICLES  
JAGUAR LAND ROVER LIMITED  
COVENTRY



**ABOVE & BEYOND**

Ever since the first Land Rover vehicle was conceived in 1947, we have built vehicles that challenge what is possible. These in turn have challenged their owners to explore new territories and conquer difficult terrains. Our vehicles epitomise the values of the designers and engineers who have created them. Each one instilled with iconic British design cues, delivering capability with composure. Which is how we continue to break new ground, defy conventions and encourage each other to go further. Land Rover truly enables you to make more of your world, to go above and beyond.









# NEW RANGE ROVER EVOQUE

New Range Rover Evoque’s dramatic, confident and sophisticated design is in complete harmony with the simplicity of its intuitive technologies and supreme levels of functionality. Sophistication and space are abundantly apparent in its beautifully appointed interior. Whilst best-in-class off-road capability adds greatly to the composure of your drive. New Range Rover Evoque. Time to make a statement.

## CONTENTS

<b>INTRODUCTION</b>		<b>VERSATILITY</b>	
New Range Rover Evoque	6	Truly Flexible	44
<b>DESIGN</b>		<b>SPECIFICATIONS</b>	
Exterior	8	Step 1 - Choose your Model	50
Interior	11	Step 2 - Choose your Engine	54
		Step 3 - Choose your Specification Pack	56
<b>PERFORMANCE AND CAPABILITY</b>		Step 4 - Choose your Exterior	58
Engines	12	Step 5 - Choose your Interior	64
Capability	14	Step 6 - Choose your Options and Land Rover Gear	68
Refined Performance	20		
<b>TECHNOLOGY</b>		<b>THE WORLD OF LAND ROVER</b>	74
Infotainment	23	<b>YOUR PEACE OF MIND</b>	78
Connectivity	25	<b>TECHNICAL SPECIFICATION</b>	
Audio	30		
Driver Assistance	32		
Efficient Technologies	38		
<b>SAFETY</b>			
Safe and Secure	40		

Vehicle shown is First Edition in Nolita Grey with optional 21" wheels fitted.

Vehicles shown are from the Land Rover global range. Specifications, options and availability may vary between markets and should be verified with your local Land Rover Retailer. CO<sub>2</sub> and fuel economy figures may vary according to wheel fitment and optional extras fitted.

## INTRODUCTION

# INTRODUCING THE NEW RANGE ROVER EVOQUE



"When Range Rover Evoque made its debut back in 2011, it transformed the world of compact SUVs. New Range Rover Evoque is set to continue that remarkable journey. Its confident pared-back exterior and modern clean interior effortlessly unite to create a truly outstanding vehicle. One that will always get admiring looks."

Gerry McGovern  
Chief Design Officer, Land Rover



## DESIGN

New Range Rover Evoque embraces the continuation of our modernist design philosophy, creating a bold evolution. With its distinctive coupé-like silhouette, characterful rising beltline and unique personality, Range Rover Evoque is a compelling successor to the vehicle that captured hearts all over the world. Detailed design highlights include flush deployable door handles, optional 21" wheels<sup>1</sup> and Matrix LED headlights with Animated Directional Indicators<sup>2</sup>, bringing a higher level of sophistication and modernity. **See page 8 for details.**

## REFINEMENT

Exemplary levels of refinement help to create new Range Rover Evoque. Optional Adaptive<sup>3</sup> and Configurable Dynamics<sup>1</sup> ensure that its handling is confident and sure-footed. A broad range of powertrain options and a 9-speed Automatic Transmission provide an efficient delivery of power regardless of the terrain or weather conditions. The perfect balance between effortless capability and on-road refinement make Range Rover Evoque a joy to drive. **See pages 12 and 20 for details.**

## CAPABILITY

The vehicle's on and off-road handling, combined with all-weather capability, guarantee it delivers a confident and assured drive, no matter what the conditions. Best-in-class departure angle and wading depth, Terrain Response 2, optional ClearSight Ground View<sup>4</sup> and the Sports Command Driving position enhance those capabilities. The vehicle's All Wheel Drive (AWD) system, along with the improved Active Driveline<sup>5</sup> feature, help to improve traction and off-road capability. **See page 14 for details.**

## INTERIOR ENVIRONMENT

Our modernist design philosophy continues throughout this roomy, luxurious interior. Uncluttered surfaces, reductive line work and carefully curated premium materials come together to create a sophisticated and highly desirable cabin. Improved interior packaging achieves optimum ergonomics to give greater comfort and control, while optional Touch Pro Duo and capacitive switches help enhance this environment. Range Rover Evoque features innovative technology, such as Smart Settings<sup>6</sup>, which recalls your personal vehicle preferences and automatically configures your Range Rover Evoque as you left it. Other features include optional Cabin Air Ionisation to improve air quality and remove allergens. **See page 11 for details.**

## TECHNOLOGY

New Range Rover Evoque uses some of our most intuitive and innovative technologies to date. Optional features such as Touch Pro Duo, a 12.3" Interactive Driver Display, Head-up Display, a Meridian™ Surround Sound System, Click and Go integrated Rear Seat Entertainment and Smartphone Pack all add greatly to your enjoyment of the vehicle. The optional ClearSight interior rear view mirror<sup>7</sup> provides an unobstructed rear view regardless of objects that would normally disrupt it. Just one in a suite of driver assistance features making every journey safer and more relaxing. **See page 23 for details.**

<sup>1</sup>Only available with Adaptive Dynamics. Not available on D150 engine. <sup>2</sup>Only available with Automatic Headlight Levelling. <sup>3</sup>Not available on D150 engine. <sup>4</sup>Available as part of the 360° Surround Camera. Only available with auto-dimming, power fold, heated door mirrors with approach lights. <sup>5</sup>D240 and P300 engines only. <sup>6</sup>Only available as part of Connect Pro. Only available with Navigation Pro. <sup>7</sup>Customers who wear varifocal or bifocal lenses may have issues adjusting to the mirror's digital mode. The normal mirror mode, however, can be used at any time.

All in-car features should be used by drivers only when safe for them to do so. Drivers must ensure they are in full control of the vehicle at all times. Meridian is a registered trademark of Meridian Audio Ltd.

Features and their availability may differ by vehicle specification and market. For full feature and option availability please refer to the accompanying Specification and Price Guide or visit your local Land Rover Retailer.

## DESIGN

# EXTERIOR



Range Rover Evoque offers a new level of refinement in a vehicle that is so instantly recognisable. Outstanding proportions deliver a dramatic silhouette and stance, truly conveying Range Rover Evoque's distinctive appearance. The characterful roofline and rising waist are amplified by a strong dynamic attitude, combined with pronounced shoulder and powerful wheel arches.

Fewer lines, cleaner surfaces and a high level of precision heighten the modernity and sophistication of this emotionally engaging design. Precise details in the front and rear graphics, with slimmer signature LED headlights, add to a sleek and contemporary appearance. New Range Rover Evoque; bold, compelling and emotionally engaging, redefines the compact luxury SUV.

Features and their availability may differ by vehicle specification and market. Please refer to the accompanying Specification and Price Guide for details or contact your local Land Rover Retailer for more information.







# INTERIOR

A dynamic interpretation of Range Rover DNA creates a sporting, cossetting interior. Our philosophy of reduction is amplified to remove visual clutter and embrace the latest technology. The next generation Range Rover Evoque interior pays homage to the original while firmly looking forward; simple, elegant lines and sophisticated surfaces work in harmony with contemporary materials to ensure a tailored and compelling environment.

Windsor leather. Kvadrat premium wool blends. Eucalyptus fibre textiles. These are just some of the materials that now furnish our interiors. Sustainable, breathable and responsibly sourced, they help create the most comfortable and sophisticated of spaces. Details including precise stitching on the facia add to the sophisticated surfaces, whilst intuitive technologies ensure the interior is clutter and fuss free.

The choice of an optional Touch Pro Duo system with its upper and lower Touchscreens enhances the cabin's clean look. The sliding panoramic roof\* enables you to fill the cabin with light and fresh air at the touch of a button. Configurable Ambient Interior Lighting enhances the ambience, added to which, the interior space has been optimised for the stowage of small items such as a smartphone, tablet or water bottle.



\*Selecting sliding panoramic roof option will reduce front and rear headroom.

All in-car features should be used by drivers only when safe for them to do so. Drivers must ensure they are in full control of the vehicle at all times.

Features and their availability may differ by vehicle specification and market. Please refer to the accompanying Specification and Price Guide for details or contact your local Land Rover Retailer for more information.

Interiors shown are First Edition and R-Dynamic HSE with optional Cloud Kvadrat premium textile and Dinamica® suedecloth seats with Cloud/Ebony interior.

## PERFORMANCE AND CAPABILITY

# ENGINES

From power and sheer driving pleasure to fuel economy and refinement, there is a range of Ingenium engines available for Range Rover Evoque and each has been optimised for specific attributes to cater for all needs. All engines are equipped with Stop/Start technology and smart regenerative charging; this feature harvests kinetic energy from deceleration to charge the battery for maximum economy, especially during urban driving. For engine availability see pages 54-55.



## TRANSMISSION

To ensure that you are always in the optimum gear, maximising fuel efficiency and acceleration, Range Rover Evoque's 9-speed Automatic Transmission has nine closely spaced ratios. Gear changes are almost imperceptible and shift schedules intelligently adapt to your driving style.

## MILD HYBRID ELECTRIC VEHICLE (MHEV)

MHEV\* is a mild hybrid system that harvests and stores energy normally lost during vehicle deceleration and intelligently redeploys it to assist the engine to maximise efficiency. It incorporates an enhanced Stop/Start system that enables the engine to shut down while the vehicle decelerates.



\*D150, D180, D240, P300 engines only. Market dependent.

# EVERYDAY CAPABILITY

There are times when the inherent capability of a Range Rover Evoque truly comes into its own. Like now. Driving downtown, a thick blanket of snow has brought the city to a standstill. With the roads icy, you select All Terrain Progress Control (ATPC). This makes the journey to your favourite breakfast spot effortless. The coffee alone is worth the trip.



A pop-up restaurant has just opened on the outskirts of the city. It's about an hour's drive away but you've heard that the food is outstanding. The landscape gets wild, but Terrain Response 2 means that you barely notice. The meal is a memory in itself.





## EXTRAORDINARY CAPABILITY

From Lone Pine, California, to the Ice Academy in Sweden, Range Rover Evoque's capability will take you anywhere. Class-leading technologies such as ClearSight Ground View<sup>1</sup> and All Wheel Drive (AWD)<sup>2</sup> ensure you tackle off-road conditions with the utmost confidence.

Continue reading to discover our full range of features.

Features and their availability may differ by vehicle specification and market. Please refer to the accompanying Specification and Price Guide for details or contact your local Land Rover Retailer for more information.





General Driving



Mud & Ruts



Grass, Gravel, Snow



Sand

## ALL WHEEL DRIVE<sup>2</sup>

Range Rover Evoque features All Wheel Drive (AWD) to ensure you always enjoy a confident drive both on and off-road. The system intelligently controls torque distribution between the front and rear axle via an electronically controlled multi-plate clutch. Drive torque is distributed across the front and rear axle to fully utilise the available traction from all four tyres. On slippery surfaces, such as grass and snow, torque can be balanced between the front and rear wheels to maximise traction. In extreme conditions where the front or rear wheels lose traction, up to 100 percent of engine torque can be distributed to the opposite axle for optimum grip. The AWD system combines with Electronic Traction Control (ETC) to deliver a sure-footed driving experience in even the most challenging situations.

## TERRAIN RESPONSE 2<sup>2</sup>

Terrain Response 2 takes the capabilities of the award-winning system to a new level. This features an automatic setting which monitors the current driving conditions and systematically selects the most suitable terrain setting. You can manually override the system should you wish.

## CLEAR SIGHT GROUND VIEW<sup>1</sup>

Optional ClearSight Ground View allows even greater levels of confidence when driving off-road or even in challenging urban situations. This feature displays a camera view of the front underside of the vehicle onto the large central Touchscreen – in normal circumstances this area would be invisible to the driver but ClearSight Ground View effectively makes it possible to ‘see through’ the bonnet. This helps you to be aware of any obstructions such as rocks or low walls and manoeuvre safely around them. ClearSight Ground View is offered in conjunction with 360° Surround Camera and makes driving Range Rover Evoque on or off-road even more satisfying.

<sup>1</sup>Available as part of the 360° Surround Camera. Only available with auto-dimming, power fold, heated door mirrors with approach lights. <sup>2</sup>Automatic Transmission only.



Features and their availability may differ by vehicle specification and market. Please refer to the accompanying Specification and Price Guide for details or contact your local Land Rover Retailer for more information.

## WADE SENSING<sup>1</sup>

Unique to Land Rover, optional Wade Sensing uses ultrasonic sensors in the door mirrors to visually and audibly alert the driver if the water approaches the vehicle's class-leading wading depth of up to 600mm. It does so by providing real-time pictorial information via the Touchscreen about its depth in relation to the vehicle and its maximum wading capability.

## ALL TERRAIN PROGRESS CONTROL (ATPC)<sup>2</sup>

All Terrain Progress Control (ATPC) is a state-of-the-art system that enables you to set and maintain a steady speed in challenging conditions such as slippery surfaces, including: mud, wet grass, ice, snow and dirt roads. Operating like a conventional cruise control system, it functions between 1.8km/h and 30km/h, enabling you to maintain full concentration on the road ahead.

## HILL DESCENT CONTROL<sup>2</sup>

Land Rover's patented Hill Descent Control (HDC) assists the driver with the controlled descents of difficult slopes. It does so by maintaining a constant speed and applying braking separately to each wheel. Hill Launch Assist ensures the vehicle doesn't roll backwards as it pulls away on an incline. The vehicle also utilises Gradient Release Control, which is designed to prevent the vehicle accelerating too quickly on a steep incline when the driver releases the brake.

## LOW TRACTION LAUNCH<sup>2</sup>

Providing you with optimum torque control when you move off from a standstill, Low Traction Launch enhances capability in slippery conditions like wet grass, snow and ice. The system remains active until the car reaches 30km/h - then Range Rover Evoque seamlessly blends back into the selected driver mode.



<sup>1</sup>Automatic Transmission only. Only available with 360° Surround Camera, auto-dimming, power fold heated door mirrors with approach lights, Drive Pack or Driver Assist Pack. <sup>2</sup>Automatic Transmission only.

Drive Pack or Driver Assist Pack. Market dependent.



## REFINED PERFORMANCE

### TORQUE VECTORING BY BRAKING

Torque Vectoring by Braking delivers controlled, responsive cornering by reducing near-limit understeer through controlled braking of the inside wheels.

- UNDERSTEER DETECTED
- FULL TORQUE TO OUTER WHEELS
- UNDERSTEER DETECTED
- FULL TORQUE TO OUTER WHEELS

## DRIVELINE DISCONNECT

Range Rover Evoque's All Wheel Drive (AWD) system has Driveline Disconnect technology. This allows the driveline to operate in Front Wheel Drive mode when cruising to reduce drag losses and maximise fuel efficiency. The driveline reconnects with an impressive response time when AWD is required to ensure Range Rover Evoque's traction and handling are not compromised.

## ACTIVE DRIVELINE<sup>1</sup>

In addition to Driveline Disconnect, D240 and P300 come standard with Active Driveline technology which delivers even greater levels of traction, stability and composure in challenging conditions. There is also increased vehicle agility under on-road conditions due to the vectoring capability that the Active Driveline system is able to provide. Where driving conditions require it, both rear clutches are fully locked to provide the same effect as a traditional locking rear differential - maximising the car's stability to increase capability.

## ADAPTIVE DYNAMICS<sup>2</sup>

The optional Adaptive Dynamics system delivers both precise dynamics and a supple ride by monitoring wheel position and body movements. To do this, the system constantly analyses acceleration, steering, throttle and brake pedal activity. The electronically controlled dampers adjust 100 times a second to optimise the suspension settings and provide the optimum balance between comfort, refinement and agility at all times.

## CONFIGURABLE DYNAMICS<sup>3</sup>

As an addition to Adaptive Dynamics, Configurable Dynamics is available to enhance either refinement and comfort or the vehicle's performance. Configurable Dynamics allows you to configure Range Rover Evoque's throttle mapping, gearbox shift points, steering settings and suspension to suit your driving needs.



<sup>1</sup>D240 and P300 engines only. <sup>2</sup>Not available on D150 engine. <sup>3</sup>Only available with Adaptive Dynamics. Not available on D150 engine.

Features and their availability may differ by vehicle specification and market. Please refer to the accompanying Specification and Price Guide for details or contact your local Land Rover Retailer for more information.



## TECHNOLOGY

# INFOTAINMENT

Delivering a wealth of information and entertainment, every Range Rover Evoque is equipped with our InControl infotainment system, Touch Pro. It features intuitive and advanced integrated technologies to ensure everyone can make the most of their journey. Technologies such as the Voice Recognition System understand clearly spoken instructions, so you can concentrate on the road ahead without any distractions.



### TOUCH PRO

The standard 10" Touchscreen at the heart of the centre console supports tap, swipe and pinch-to-zoom gestures and delivers our richest ever audio-visual entertainment. To enhance the in-car experience, Touch Pro offers customisable homescreens and fast response times as well as voice control. Multi-tasking is also made easy thanks to the Interactive Side Panel. Touch Pro can be further enhanced by adding the connectivity package, Connect Pro.

### TOUCH PRO DUO

The optional 10" dual high-definition Touchscreens allow the user to view required information whilst simultaneously being able to interact with additional features, for increased flexibility and efficiency of use. For instance, you can use the navigation system in the upper screen whilst playing media on the lower screen. Direct access to cabin and seat temperature controls are also available via the multi-function dynamic dials.

### INTERACTIVE DRIVER DISPLAY

Range Rover Evoque ensures you're always entertained, informed and connected. It features an optional 12.3" high-definition Interactive Driver Display that can receive and project a vast amount of driving information, entertainment and active safety data including navigation, phone and media. Its high resolution ensures the utmost clarity and its refined processing engine delivers smooth moving pin-sharp graphics.

### HEAD-UP DISPLAY

To help reduce distraction or the need for you to take your eyes off the road, Head-up Display\* is an option that presents key vehicle data such as your speed, gear position and navigation directions on the windscreen. It features crystal clear full-colour graphics in high resolution, enabling you to see all driver inputs and information with ease. It can display important information from the Touchscreen including phone information. The feature can be turned on and off dependent on driver preference.

\*Only available with solar attenuating windscreen. Market dependent.

All in-car features should be used only when safe to do so. Drivers must ensure they are in full control of the vehicle at all time.

Features and their availability may differ by vehicle specification and market. Please refer to the accompanying Specification and Price Guide for details or contact your local Land Rover Retailer for more information.

Interior shown is R-Dynamic HSE with optional Cloud Kvadrat premium textile and Dinamica® suedecloth seats with Cloud/Ebony interior.





# CONNECTIVITY

Land Rover's suite of standard and optional connectivity features ensures that you and your vehicle are linked seamlessly and securely to the outside world. Optional Smartphone Pack<sup>1</sup> allows vehicle optimised apps on your smartphone to be controlled through the Touchscreen, including your contacts, calendar and music player. Optional Navigation Pro<sup>2</sup> and Connect Pro<sup>3</sup> make sure the Land Rover experience is more enjoyable than ever.



<sup>1</sup>Market dependent. <sup>2</sup>Only available with Connect Pro, Traffic Sign Recognition and Adaptive Speed Limiter.  
<sup>3</sup>Only available with Navigation Pro.

InControl features, options and their availability remain market dependent - check with your Land Rover Retailer for local market availability and full terms. Information and images displayed in relation to the InControl technology, including screens or sequences, are subject to software updates, version control and other system/visual changes depending on options selected. Mobile network connectivity cannot be guaranteed in all locations. InControl Apps and Remote App will need to be downloaded from the Apple/Play Store. All in-car features should be used by drivers only when safe for them to do so. Drivers must ensure they are in full control of the vehicle at all times.

Android™ is a trademark of Google Inc. Apple Watch® and Apple CarPlay® are registered trademarks of Apple Inc., registered in the US and other countries.

## OPTIONAL FEATURES



### SMARTPHONE PACK

By screen sharing with Range Rover Evoque's InControl infotainment system, the Smartphone Pack<sup>1</sup> helps you stay connected to your smartphone even while in the car. Featuring InControl Apps technology, this Pack allows vehicle-optimised apps on your Apple® smartphone to be controlled through the Touchscreen, including your contacts, calendar and music player, via a USB cable. You can also download third-party apps offering a vast range of services including Spotify<sup>1</sup> and Tile<sup>2</sup>.

**InControl Apps**<sup>1</sup> present a vehicle-optimised, interactive set of apps that enable media streaming, cloud and location-based services and more - via the USB port.

**Apple CarPlay**<sup>®1</sup> is designed for increased safety, enabling the use of apps while allowing the driver to concentrate on the road ahead. Connect your Apple smartphone to your car to use compatible apps such as maps, messages and music through the Touchscreen.

**Spotify**<sup>2</sup> - Access a library of more than 30 million songs with this seamlessly integrated app. Featuring all the same intuitive functionality as the Spotify smartphone app, you can search songs, stations and recommendations, create playlists and access your music in offline mode. Simply log in using your existing Spotify Free or Spotify Premium account.

**Tile**<sup>3</sup> - Helps you find lost or misplaced items in seconds. Attach a tiny Bluetooth tracker Tile to your keys, wallet or bag. The easy-to-use Tile app can then help you find these items should they be misplaced. The app is accessible any time through your vehicle's Touchscreen, allowing you to make sure you have everything you need with you, before you set off on your journey.



<sup>1</sup>Market dependent. <sup>2</sup>Please check App Store and Google Play for availability. <sup>3</sup>Requires InControl Apps ©2016 Tile Inc. Tile and the Tile design are trademarks of Tile, Inc. Bluetooth tracker tiles must be purchased separately.

The Bluetooth<sup>®</sup> word mark and logos are owned by the Bluetooth SIG, Inc. and any use of such marks by Land Rover is under licence. Android<sup>™</sup> is a trademark of Google Inc. Apple Watch<sup>®</sup> and Apple CarPlay<sup>®</sup> are registered trademarks of Apple Inc., registered in the US and other countries.

InControl features, options and their availability remain market dependent - check with your Land Rover Retailer for local market availability and full terms. Information and images displayed in relation to the InControl technology, including screens or sequences, are subject to software updates, version control and other system/visual changes depending on options selected. Mobile network connectivity cannot be guaranteed in all locations. InControl Apps and Remote App will need to be downloaded from the Apple/Play Store. All in-car features should be used by drivers only when safe for them to do so. Drivers must ensure they are in full control of the vehicle at all times.



## OPTIONAL FEATURES

### NAVIGATION PRO<sup>1</sup>

Range Rover Evoque's optional navigation system, Navigation Pro, allows you to save your favourite places, use tap, swipe and pinch-to-zoom gestures for simple map exploration and display a choice of either 2D or 3D crystal clear map graphics. You can also keep maps up-to-date with the latest release of Map Care. Included with Navigation Pro, Traffic Sign Recognition keeps you informed and aware on the road by displaying speed limits and 'no overtaking' signs in the instrument cluster, where they can easily be seen. Adaptive Speed Limiter uses Traffic Sign Recognition information to adjust your vehicle's speed accordingly by using the cruise control system. Navigation Pro must be ordered with Connect Pro.

### CONNECT PRO<sup>2</sup>

Connect Pro consists of 4G Wi-Fi Hotspot, Pro Services and Smart Settings. It's designed to enhance your in-car and out-of-car experience, ensuring you and your passengers enjoy the journey whilst remaining connected to the world.

#### 4G Wi-Fi Hotspot

Provides in-car access to the Internet, enabling up to eight wireless devices to be used simultaneously in the car. Passengers can connect through the vehicle's wireless network to surf, work, update social media and stay entertained throughout the journey.

#### Pro Services<sup>3</sup>

- **Real Time Traffic Information:** Uses live traffic data feeds to give you the most accurate picture of what the traffic is like on the way to your destination.
- **One-box Search:** Wherever you are, you can search the surrounding area for places of interest. The system can access expert destination information, travel tips and inspiration as well as online travel reviews of the local area.
- **Online Routing:** While you're on your way to a destination the system monitors live traffic conditions and takes into account typical traffic patterns for that time of day, keeping you on the optimum route.
- **Planning Routes and Door-to-Door Routing:** Before setting off, use the Route Planner app or online portal to search, save locations or set your destination. The app uses the Cloud to send your destination automatically to your vehicle's navigation screen. When arriving at a car park, it isn't always clear how to get to your final destination. As you exit the vehicle, the Navigation Pro system will automatically hand over to the Route Planner app on your smartphone. You can then access directions on how to get there via public transport or on foot. You are always connected - every step of the way, right to the door.

- **Commute Mode:** Allows the system to learn your commutes and automatically advises you of the expected journey time based on live and historical traffic movements without you having to input a destination. The system learns the routes you take for a given destination and then advises which of those is the quickest. The feature can be turned on and off dependent on driver preference.

- **Parking Service:** As you approach your destination, you can see where parking is available. Simply tap on your preferred car park and the navigation system updates to direct you to it.

**Smart Settings**

Designed to deliver a truly personalised experience and reduce driver distraction, Smart Settings combines a number of features.

- **Profile:** The system automatically identifies each driver using their key and phone, and can remember a number of settings saved to their profile. It can select your preferred seat and mirror positions, as well as which media to play at the start of your journey.

- **Learning:** With the 'Learning' function, Smart Settings can also learn and automate your preferences, based on your habits, past routines and the current temperature - including whether you like a warm steering wheel or heated seats on a morning commute.



<sup>1</sup>Only available with Connect Pro and Traffic Sign Recognition and Adaptive Speed Limiter. Market dependent.  
<sup>2</sup>Only available with Navigation Pro. Market dependent. <sup>3</sup>Online functionality and Wi-Fi connectivity is dependent on the installation of a micro SIM with suitable data contract. 4G Wi-Fi Hotspot, and Pro Services contain subscription services that can be extended after the initial term advised by your Land Rover Retailer. Market dependent.

InControl features, options and their availability remain market dependent - check with your Land Rover Retailer for local market availability and full terms. Information and images displayed in relation to the InControl technology, including screens or sequences, are subject to software updates, version control and other system/visual changes depending on options selected. Mobile network connectivity cannot be guaranteed in all locations. InControl Apps and Remote App will need to be downloaded from the Apple/Play Store. All in-car features should be used by drivers only when safe for them to do so. Drivers must ensure they are in full control of the vehicle at all times.

# AUDIO

A vehicle's cabin is the ideal place within which to experience your personal choice of music and Range Rover Evoque has three different audio systems to bring your music to life:

 14 SPEAKERS

 SUBWOOFER



Audio system shown above is the Meridian Surround Sound System

## SOUND SYSTEM

Outstanding acoustic range through six speakers.

## MERIDIAN™ SOUND SYSTEM

Great definition, crystal clear highs and full, deep bass - delivered through the careful arrangement of 10 door-mounted speakers and a dual channel subwoofer.

## MERIDIAN™ SURROUND SOUND SYSTEM

All the fullness and clarity of a live performance delivered through an arrangement of 14 front, side and rear speakers and a dual channel subwoofer - seamlessly brought together using Trifield™ technology. Exclusive to Meridian, Trifield perfectly blends the centre and surround channels with left and right channels ensuring an optimum, consistent sound experience for each passenger.

## DAB RADIO

The option of DAB radio\* technology offers improved sound quality, a wide choice of stations and live text information about the station, show and song you are listening to.

## MERIDIAN™

Formed in 1977 in Cambridgeshire, England, Land Rover's audio partner Meridian has pioneered many firsts including active speakers and the world's first digital surround sound processor. Meridian's audio technology input has helped ensure that Range Rover Evoque is the most superb space within which to experience sound. Meridian Cabin Correction technology was utilised to analyse cabin shape, acoustics and resonance characteristics in order to help remove unwanted sounds. The advanced algorithm ensures that the rhythm, punch and timing of any piece of music are heard precisely how the artist intended, providing a consistently exceptional quality audio experience for all passengers in the vehicle.



### DIGITAL SIGNAL PROCESSING

Brings all elements of the audio system together as one, for performance that would otherwise require significantly larger speakers.



### MERIDIAN CABIN CORRECTION

The advanced algorithm of Meridian's Cabin Correction tailors the sound experience to the precise acoustics of Range Rover Evoque's interior.




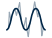


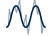


### MERIDIAN DIGITAL DITHER SHAPING

To maintain the quality of musical recordings, they are converted into a common digital format. Meridian Digital Dither Shaping ensures that digital signal conversions are made smoothly and seamlessly, preserving the finest details of the audio performance. The result is authentic musical conversion, evoking the emotions of the original recording.



### TRIFIELD

Exclusive to Meridian, Trifield blends the centre and surround channels seamlessly with left and right channels, delivering a consistent, concert-like experience for all occupants.

	UNIQUE MERIDIAN TECHNOLOGY	SPEAKERS	SUBWOOFER	WATTS
Sound System	N/A	6	N/A	180
Meridian™ Sound System	  	10	1	380
Meridian™ Surround Sound System	   	14	1	825

Meridian is a registered trademark of Meridian Audio Ltd.  
Trifield and the "three fields" device is a trademark of Trifield Productions Ltd.  
Features and their availability may differ by vehicle specification and market.

# DRIVER ASSISTANCE

## SAFER AND EASIER

From negotiating city traffic or the motorway, to providing additional safety for you and your passengers, there's a wealth of innovative technologies available - either as standard, optional or as part of an optional pack. Whichever you choose, you'll find every single feature has been designed and engineered to heighten your enjoyment of the vehicle.

### STANDARD FEATURES

**Rear Camera** provides improved visibility when reversing. Static lines representing the vehicle's outer perimeter and predicted path are superimposed on the rear view image displayed on your Touchscreen.

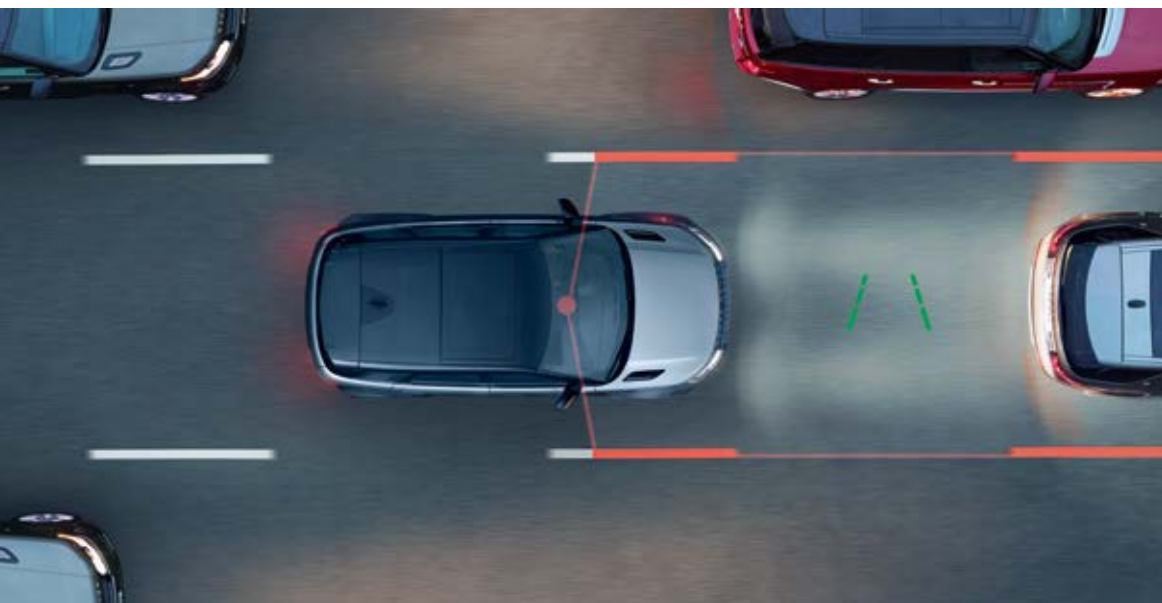
**Cruise Control and Speed Limiter** allows the driver to maintain the current speed of the vehicle without the need for continued use of the accelerator pedal, helping to reduce driver fatigue. The Speed Limiter will also allow the driver to pre-set a maximum specified speed which the vehicle will not exceed. Both functions can be easily turned on or off by the driver as desired.

**Driver Condition Monitor** detects if you're starting to feel drowsy and gives you an early warning when you need to take a break.

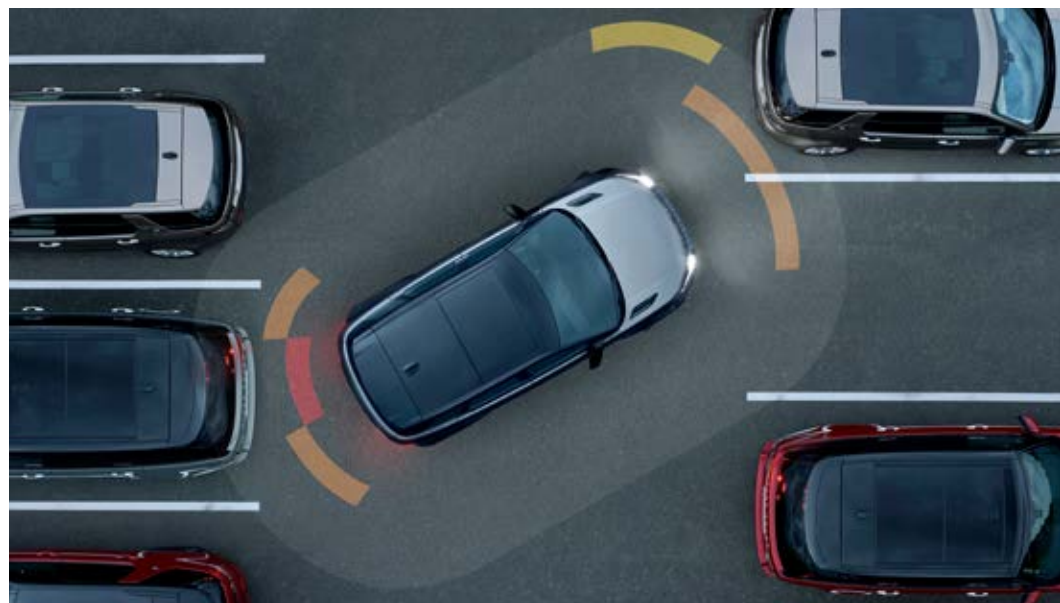
**Lane Keep Assist** detects when the vehicle is unintentionally drifting out of the lane, and applies a corrective torque to the steering wheel, encouraging you to guide your vehicle back.

**Front and Rear Parking Aid** helps make manoeuvring even easier. Sensors located in the front and rear bumpers are activated manually, or when reverse is selected. As you park, the Touchscreen display and audio feedback indicates how close you are to obstacles.





Lane Keep Assist



Front and Rear Parking Aid

## OPTIONAL FEATURES



### CLEAR SIGHT INTERIOR REAR VIEW MIRROR

A first for Land Rover, this innovative new technology provides an unobstructed view of the road behind you regardless of objects that would normally disrupt it through the standard rear view mirror - say, for instance, passengers or large rear loads. Featuring an additional camera placed in the antenna roof pod at the rear of the vehicle, a video feed is displayed on an embedded digital display<sup>1</sup> in the mirror, providing a much wider and therefore improved field of view. You can use this feature in normal or display mode, the latter showing the video feed. A switch located under the mirror unit makes changing between modes simple.

<sup>1</sup>Customers who wear varifocal or bifocal lenses may have issues adjusting to the mirror's digital mode. The normal mirror mode, however, can be used at any time. Market dependent.

<sup>2</sup>Only available with auto-dimming, power fold heated door mirrors with approach lights.



ClearSight interior rear view mirror deactivated (above) and activated (below)



### 360° SURROUND CAMERA<sup>2</sup>

**360° Surround Camera** uses four digital cameras discretely placed around the vehicle, providing a 360° bird's-eye view on the Touchscreen. With the capacity to display several different views at the same time, this helps with various manoeuvres from parking by a kerb, to getting in and out of tight spaces and junctions. Also includes ClearSight Ground View (see page 17).

## OPTIONAL PACKS

Optional packs are available, featuring a range of technologies to enhance the driving experience. **Park Pack** assists you to park and manoeuvre safely and more easily in and out of tight spaces and into traffic that is obscured by buildings or other vehicles. While **Drive Pack** helps to make every journey safer and more relaxing, the **Driver Assist Pack** contains the most comprehensive suite of drive and park technologies.



Park Assist



Rear Traffic Monitor

### PARK PACK

**Park Assist** makes parallel and bay parking easier by steering your vehicle into a suitable space. You just have to select the appropriate gear and control the vehicle's speed, whilst graphics and notifications guide you through the manoeuvres. Park Assist can also steer you out of a parallel parking space, taking all of the stress out of parking.

**Rear Traffic Monitor**<sup>1</sup> is particularly useful when reversing out of a parking bay. The system warns you of vehicles, pedestrians or other hazards approaching from either side of your vehicle. It will alert you with both audible and visual warnings so you know what's behind you, even when the view is obstructed.

**360° Parking Aid** gives you complete confidence when manoeuvring in tight spaces. Sensors located around the vehicle are automatically triggered when Reverse is selected, or can be manually activated, with a graphic appearing on the Touchscreen showing an overhead view of the vehicle. As you park, the Touchscreen display and audio feedback indicate how close you are to obstacles.

**Clear Exit Monitor**<sup>1</sup> helps passengers exit the vehicle safely by providing a warning of approaching hazards, such as passing vehicles and cyclists. When a passenger begins to unlatch their door, a small warning light will illuminate if an oncoming hazard is detected.



Adaptive Cruise Control

## DRIVE PACK\*

**Adaptive Cruise Control** will keep your vehicle a safe distance from the one in front should it slow or stop when you're cruising on the motorway or travelling in slow-moving traffic. Should the vehicle in front stop completely, your vehicle will come to a smooth halt. In stop-start traffic, Adaptive Cruise Control will automatically resume following the car in front.

**High-speed Emergency Braking** detects when a potential frontal collision with another vehicle may occur and displays a forward alert to warn the driver to brake. If the driver doesn't react, the vehicle will deploy the brakes in order to reduce the severity of the possible impact. High-speed Emergency Braking is ready and active from 10-160km/h.



Blind Spot Assist

**Blind Spot Assist** can help you prevent collisions. If your vehicle detects another car in your blind spot when you begin to change lanes, a small warning light illuminates in the corresponding door mirror. Corrective torque is also applied to the steering wheel, encouraging you to guide your vehicle away from the approaching vehicle.



## EFFICIENT TECHNOLOGIES

### SUSTAINABLE BY DESIGN

Land Rover is committed to producing vehicles that use more sustainable materials, produce less waste and use fewer natural resources as part of our approach to sustainability excellence. Range Rover Evoque's development process has included a full life cycle assessment and has been designed to be 85 percent recyclable/re-usable and 95 percent recoverable at the end of the vehicle's life.

## ADVANCED AERODYNAMICS

The streamlined design of our latest vehicle has been carefully optimised to make Range Rover Evoque the most aerodynamic Range Rover ever.

## ENGINE MANUFACTURING CENTRE

Land Rover's Engine Manufacturing Centre, where our engines are developed, has been built to the highest environmental standard (BREEAM Excellent) and features the largest rooftop solar panel installation in the UK. Comprising of no fewer than 22,600 individual panels, which are capable of providing up to 6.2MW (enough energy to power up to 1,600 homes), the panels generate more than 30 percent of the site's energy, reducing the plant's CO<sub>2</sub> footprint by over 2,400 tonnes per year.

## EUCALYPTUS TEXTILE AND ULTRAFABRICS™ SEATS

Eucalyptus textile is made from Forest Stewardship Council (FSC) certified Tencel material, and is complemented by a sustainable, breathable, performance Ultrafabrics™ material which is manufactured using processes that conserve raw materials.

## KVADRAT PREMIUM TEXTILE AND DINAMICA® SUEDECLOTH SEATS

Kvadrat premium textile is a highly durable wool-blend fabric. Exhibiting the natural characteristics of wool, it is hard wearing and comfortable for all climates, by staying cool in the heat and warm in the cold. Dinamica® suedecloth is produced from recycled polyester fibres and plastics in a process which uses no harmful chemical substances.





ISOFIX POINTS

AIRBAGS

## SAFETY

# SAFE AND SECURE

Designed for optimum safety, Range Rover Evoque has been engineered to include a wealth of standard features not only to help to protect you and your passengers, but to actively help prevent accidents from happening.

Range Rover Evoque's elevated Sports Command Driving Position provides enhanced visibility in all conditions. You can see more of the road and be easily seen by other road users, providing an enhanced feeling of safety and confidence. When fitted, All Wheel Drive (AWD) helps you stay firmly planted on the road whatever the weather or environmental conditions.



The safety of Range Rover Evoque is further enhanced by the latest technologies included as standard:

**Dynamic Stability Control (DSC)** monitors Range Rover Evoque's dynamic behaviour, intervening to maximise vehicle stability. DSC reduces engine torque and applies braking to the appropriate wheels to correct the vehicle's direction of travel by counteracting understeer or oversteer.

**Anti-lock Braking System (ABS)** allows the vehicle to maintain traction with the road surface whilst braking and prevents wheels from locking – thereby retaining the vehicle's ability to steer. The system helps to shorten the braking distance.

**Electronic Brake-force Distribution (EBD)** automatically varies the braking force to each axle in order to minimise stopping distance, while still maintaining stability and the vehicle's ability to steer.

**Electronic Traction Control (ETC)** optimises traction and stability by controlling wheel spin. The ETC system reduces torque to the spinning wheel, then applies braking to the wheel, if required.

**Cornering Brake Control (CBC)** automatically varies the braking force to each wheel when the vehicle's brakes are applied around a corner and the limit of grip is reached. The system will prevent the vehicle's wheels from locking up and skidding in this event through varying the braking force applied to each wheel.

**Roll Stability Control (RSC)** is integrated with DSC to reduce the possibility of rollover, while providing agility and ability to steer around obstacles. It monitors the vehicle motion and cornering forces to detect any potential risk of rollover. When risk is detected, braking is applied to the outside front wheel to reduce forces which contribute to rollover.

**Emergency Brake Assist** understands when you apply the brakes quickly but without the necessary force to maximise stopping performance. It therefore boosts the brake pressure through the ABS pump to ensure you stop in time. To help reduce the risk of a collision, the Emergency Stop Signal system automatically activates the hazard warning lights during emergency braking.

**ISOFIX and Airbags** improve safety even further. Two ISOFIX points for baby/child seat restraints are fitted on each side of the rear seats and a comprehensive system of six airbags, including driver, passenger, side curtain and thorax airbags, are fitted as standard to protect occupants.

InControl features, options and their availability remain market dependent – check with your Land Rover Retailer for local market availability and full terms. Information and images displayed in relation to the InControl technology, including screens or sequences, are subject to software updates, version control and other system/visual changes depending on options selected. Mobile network connectivity cannot be guaranteed in all locations. InControl Apps and Remote App will need to be downloaded from the Apple/Play Store. All in-car features should be used by drivers only when safe for them to do so. Drivers must ensure they are in full control of the vehicle at all times.

Features and their availability may differ by vehicle specification and market. Please refer to the accompanying Specification and Price Guide for details or contact your local Land Rover Retailer for more information.



## BRIGHTER LIGHTS, SAFER NIGHT-TIME DRIVING

Range Rover Evoque features all-round exterior LED lighting as standard. LED lights are designed to last the lifetime of the vehicle and are more fuel-efficient as they use less energy. The quality of light produced is closer to daylight conditions, so driving at night becomes less tiring.

The optional Premium LED headlights\* feature front and rear Animated Directional Indicators and the distinct exterior graphic of the signature Daytime Running Lights (DRL).

## MATRIX LED HEADLIGHTS

The optional Matrix LED headlights with signature DRL\* enable an Adaptive Driving Beam. By splitting the main beam into vertical strips, the adaptive beam maximises the number of high beam sections for ultimate visibility, while casting a shadow over oncoming traffic to help to prevent dazzling. The adaptive beam is also able to optimise the light distribution to suit the driving conditions of town, country, motorway or bad weather. Matrix LED headlights include front and rear Animated Directional Indicators, which reduce the time it takes other road users to recognise the intended direction of travel.



	LED HEADLIGHTS	PREMIUM LED HEADLIGHTS	MATRIX LED HEADLIGHTS
All exterior LED lighting	■	■	■
Signature DRL	-	■	■
LED tail lights	■	-	-
Signature Hi-Line tail lights	-	■	■
Manual Headlight Levelling	■	-	-
Automatic Headlight Levelling	-	■	■
Headlight power wash	□	□	□
Front and Rear Animated Directional Indicators	-	■	■
Auto High Beam Assist (AHBA)	□	■	-
Adaptive Front Lighting System (AFS)	-	-	■
Adaptive Driving Beam	-	-	■
Static Cornering Light	-	-	■

■ Standard □ Optional - Not Available.

\*Only available with Automatic Headlight Levelling.

Features and their availability may differ by vehicle specification and market. Please refer to the accompanying Specification and Price Guide for details or contact your local Land Rover Retailer for more information.



## VERSATILITY

# TRULY FLEXIBLE

Range Rover Evoque has been created, engineered and built to tackle modern life in all its guises. For instance, optional powered gesture tailgate\* enables you to open and close the tailgate from the kerb without using your key fob or touching the vehicle. So whether you're loading the weekly shop, or large and awkward objects, you can always do so with the absolute minimum fuss. Sensors on either side of the vehicle, rather than in the centre, ensure you can deploy the system safely from the kerb: you simply deliver a smooth upward kick movement beneath the sensor for the system to operate.

\*Only available with Keyless Entry.

Vehicle shown is R-Dynamic HSE in Seoul Pearl Silver with optional features fitted. Image above features a Land Rover Leather weekender bag. Visit [landrover-me.com/collection](https://landrover-me.com/collection) or contact your local Land Rover Retailer for more information.



**5 SEATS**  
 DRY 472 LITRES    WET 591 LITRES



**4 SEATS**  
 DRY 746 LITRES    WET 908 LITRES



**3 SEATS**  
 DRY 882 LITRES    WET 1,066 LITRES



**2 SEATS**  
 DRY 1,156 LITRES    WET 1,383 LITRES

Passengers can now take advantage of up to 1,383 litres of luggage space which – with a 40:20:40 rear bench as standard – makes every millimetre of Range Rover Evoque a versatile and highly functional vehicle. When the seats are fully down, it can readily accommodate several suitcases so when you're heading off for the perfect weekend getaway, you never have to compromise on space.

Dry: Volume as measured with VDA-compliant solid blocks (200mm x 50mm x 100mm). Wet: Volume as measured by simulating the load space filled with liquid. Please refer to the accompanying Technical Specification for full details.

## CABIN STOWAGE

Both driver and passenger can make use of Range Rover Evoque's many stowage options. With an impressive 26 litres for small items, it can be adapted to suit all of your needs. The door bins have a total of 13.6 litres of capacity to handily store water bottles, the cubby box some 4.5 litres. There's even 1.7 litres of additional room beneath the Touchscreen which is an ideal place to keep your smartphone.





#### ACTIVITY KEY

With the optional Activity Key you can enjoy your favourite activities, and keep your car key securely in the car. For extra convenience, you can strap the Activity Key to your wrist. The wristband is robust and fully waterproof, allowing you to take part in a range of activities from cycling to swimming. Simply place your Activity Key against the sensor on the tailgate to lock or unlock the car and deactivate or reactivate the conventional key fob.



#### POWER SOCKETS

There are two USB ports and a 12-volt socket located inside the cubby box. For second row occupants, a 12-volt power socket is fitted to the rear centre console and there's a further 12-volt power socket located in the rear loadspace area. The option to add another two USB ports means that multiple electronic devices can be charged or connected on the go.



#### CLICK AND GO INTEGRATED BASE UNIT

With the optional Click and Go integrated base unit, rear seat passengers will be able to use their tablet devices throughout any journey. With a mounting mechanism and rear USB charger, everyone can stay connected, everywhere in the vehicle.



#### CABIN AIR IONISATION

This optional Nanoe™ technology enhances the well-being of both driver and passengers alike. It improves the air quality within the vehicle cabin by removing allergens, viruses, airborne bacteria and associated odours. It does so by ionising particles in the air, making them attract to and neutralise the air contaminants. It can be switched on or off.

NEW RANGE ROVER EVOQUE OFFERS  
YOU GREAT OPTIONS AND FLEXIBILITY  
TO PERSONALISE YOUR VEHICLE.

The following pages take you through a logical series of steps to make your vehicle a true expression of your individuality. You have a number of choices: from selecting your engine and model to exterior and interior colours, wheels, finishes and those detailed touches that define your character.

You can start with our online configurator at [landover-me.com/newRangeRoverEvoque](https://landover-me.com/newRangeRoverEvoque)

50-53

---

1

---

**STEP 1  
CHOOSE YOUR MODEL**

If you would like Land Rover designers to choose your Range Rover Evoque features for you, turn to page 50 to see our First Edition.

If you would like to specify your own vehicle, turn to page 52 where you can compare the standard features across Range Rover Evoque and Range Rover Evoque R-Dynamic.

54-55

---

2

---

**STEP 2  
CHOOSE YOUR ENGINE**

You can select from a choice of 2.0 litre diesel or petrol engines.



56-57

---

3

---

**STEP 3  
CHOOSE YOUR  
SPECIFICATION PACK**

You can individualise your Range Rover Evoque even further from a choice of superbly designed and engineered premium specification packs.

58-63

---

4

---

**STEP 4  
CHOOSE YOUR EXTERIOR**

There's a wide range of exterior options to select from, including roof styles, paint colours and wheels. All of these enable you to truly express yourself.

64-67

---

5

---

**STEP 5  
CHOOSE YOUR INTERIOR**

Now you have chosen your model, you can select the perfect combination of interior colours.

68-73

---

6

---

**STEP 6  
CHOOSE YOUR OPTIONS  
AND LAND ROVER GEAR**

You can choose from a wealth of line-fit options to create the exact vehicle you require. A range of accessories which your Retailer can fit is also available.

# 1

## CHOOSE YOUR MODEL

### SELECT YOUR FIRST EDITION

Range Rover Evoque First Edition is a truly sophisticated and seductive vehicle. Only available for one year from launch, it features myriad exclusive touches that further enhance Range Rover Evoque's celebrated design cues. A Black contrast and fixed panoramic roof, Gradated Linear Dark Aluminium trim finisher with First Edition script, First Edition carpet mats and Cloud/Ebony grained leather seats with Cloud/Ebony interior are all included. First Edition includes all of the features available on the R-Dynamic SE (see page 53) plus the following as standard!:



Seoul Pearl Silver



Yulong White

**Engine availability:**

D180 and P250 engines (see pages 54-55)

**Features include:**

Drive Pack - Front fog lights - Privacy glass - Headlight power wash

Keyless Entry - Head-up Display - Meridian™ Sound System

ClearSight interior rear view mirror - Heated steering wheel - Heated front seats

Configurable Ambient Interior Lighting - First Edition carpet mats<sup>2</sup>



Nolita Grey<sup>2</sup>



Illuminated metal treadplates with First Edition script<sup>2</sup>



20" Style 5079, 5 split-spoke, Gloss Dark Grey with contrast Diamond Turned finish



Graded Linear Dark Aluminium trim finisher with First Edition script<sup>2</sup>



Matrix LED headlights with signature DRL

<sup>1</sup>Market dependent. <sup>2</sup>Exclusive to First Edition. All features described as exclusive to Range Rover Evoque First Edition may become available as options in future model years.

## SELECT RANGE ROVER EVOQUE OR RANGE ROVER EVOQUE R-DYNAMIC

Each model has a choice of engines and distinctive features. This guide will help you to select your ideal Range Rover Evoque. On the following pages you'll see the standard features for each model.

Configure your Range Rover Evoque at [landover-me.com/newRangeRoverEvoque](https://landover-me.com/newRangeRoverEvoque)

### RANGE ROVER EVOQUE



### RANGE ROVER EVOQUE R-DYNAMIC



## STANDARD FEATURES

### EXTERIOR FEATURES

- Flush deployable door handles
- LED headlights
- Automatic headlights
- Rear fog lights
- Rain sensing windscreen wipers
- Tailgate spoiler
- Heated door mirrors
- Approach illumination
- Evoque badge.

### WHEELS AND TYRES

- 17" Style 1005, 10 spoke, Satin Dark Grey<sup>1</sup>
- All-season tyres
- Tyre Pressure Monitoring System (TPMS)<sup>2</sup>
- Reduced section steel spare wheel.

### INTERIOR FEATURES

- Twin sliding front centre armrest
- Ambient Interior Lighting
- Twin front cupholders with cover
- Two-zone Climate Control
- Rear air vents
- Sunvisors with illuminated vanity mirrors

- Standard treadplates
- Push Button Start
- Overhead lighting console
- Overhead stowage for sunglasses.

### SEATING AND INTERIOR TRIM

- Fabric seats
- 8-way manual front seats
- 40:20:40 rear seat fold
- Rear centre headrest
- Gradated Linear Bright Aluminium trim finisher
- Leather steering wheel
- Light Oyster Morzine headlining.

### DYNAMICS

- Efficient Driveline<sup>3</sup>
- Active Driveline<sup>4</sup>
- Terrain Response 2
- All Terrain Progress Control (ATPC)
- Low Traction Launch
- Hill Descent Control (HDC)
- Torque Vectoring by Braking
- Passive suspension
- Hill Launch Assist

- Electronic Power Assisted Steering (EPAS)
- Dynamic Stability Control (DSC)
- Electronic Traction Control (ETC)
- Roll Stability Control (RSC)
- Electric Parking Brake (EPB).

### INFOTAINMENT

- 10" Touch Pro
- Analogue Dials with Central TFT Display
- Sound System
- Bluetooth® connectivity.

### DRIVER ASSISTANCE

- Rear Camera
- Front and Rear Parking Aid
- Lane Keep Assist
- Cruise Control and Speed Limiter
- Driver Condition Monitor.

### SAFETY

- Voice control
- Brake pad wear indicator
- Emergency Brake Assist
- Anti-lock Braking System (ABS)
- Electronic Brake-force Distribution (EBD)
- Seat belt reminder
- Rear ISOFIX
- Power operated child locks
- Six airbags
- Pedestrian Airbag System<sup>5</sup>
- Customer Configurable Autolock
- Passive front head restraints.

### CONVENIENCE

- Power Socket Pack 1
- Heated rear window with timer
- Electric windows with one-touch open/close and anti-trap
- Manual tailgate
- Manual dipping interior rear view mirror.

## R-DYNAMIC FEATURES IN ADDITION TO STANDARD FEATURES

- 17" Style 5073, 5 split-spoke, Satin Dark Grey<sup>6</sup>
- Dark Atlas RANGE ROVER bonnet script
- Dark Atlas grille with Gloss Black surround
- Body-coloured front bumper with Dark Satin Grey valance

- Burnished Copper bonnet louvres
- Burnished Copper side vents
- Gloss Black door mirror caps
- Dark Atlas RANGE ROVER tailgate script

- Dark Satin Grey rear bumper with body-coloured valance
- Burnished Copper exhaust finishers
- Gradated Linear Dark Aluminium trim finisher
- Black gearshift paddles
- Perforated leather steering wheel

- Ebony Morzine headlining
- Chrome treadplates
- Bright metal pedals
- Evoque and R-Dynamic badge.

<sup>1</sup>18" Style 5075, 5 split-spoke, Gloss Sparkle Silver is standard on D240, P250 and P300 engines. <sup>2</sup>Standard on D150, D180, P200, P250 engines. Automatic Transmission only.

<sup>3</sup>Standard on D240 and P300 engines. <sup>4</sup>Automatic Transmission only. <sup>5</sup>Market dependent. <sup>6</sup>18" Style 5074, 5 split-spoke, Gloss Sparkle Silver is standard on D240, P250 and P300 engines.

The Bluetooth word mark and logos are owned by the Bluetooth SIG, Inc. and any use of such marks by Land Rover is under licence.

# 2

## CHOOSE YOUR ENGINE

### WHICH ENGINE IS RIGHT FOR YOU?

Petrol and diesel engines offer different strengths to suit different customer use cases.

Diesel engines offer better fuel economy over longer distances and produce more torque, which makes them the ideal choice for longer journeys, motorway cruising, towing or off-roading. Our new diesels feature such advanced technologies that they are now as clean as petrol, but also emit less CO<sub>2</sub>.

Petrol engines are typically more powerful and produce higher revving, which can provide a more engaging and sporting driving experience. They are more refined and are better suited to shorter, stop-start journeys.

Configure your Range Rover Evoque at [landover-me.com/newRangeRoverEvoque](https://landover-me.com/newRangeRoverEvoque)

### DIESEL ENGINES

#### D150

##### All Wheel Drive Automatic

The Ingenium 2.0 litre 4-cylinder 150PS Turbocharged Diesel engine is optimised to deliver the best fuel economy in the range.

- The stiff lightweight engine block with twin balancer shafts ensure inherently low levels of noise and vibration.
- Intelligent, electronically controlled, adaptive engine cooling only engages when required - minimising fuel consumption and CO<sub>2</sub> emissions.

#### D180

##### All Wheel Drive Automatic

The Ingenium 2.0 litre 4-cylinder 180PS Turbocharged Diesel engine produces 430Nm of torque and is optimised to deliver improved drivability and refinement.

- The high-pressure common rail direct fuel injection, exhaust variable cam timing and a high-efficiency water-cooled intercooler work in combination for a clean, efficient combustion.
- 430Nm of torque is delivered over a wide engine speed range from 1,750-2,500rpm, delivering accessible performance and strong acceleration.
- The engine features a variable geometry turbocharger that adapts to the changing flow of exhaust gases for high torque throughout the rev range and responsiveness that is uniform, progressive and reduces lag.

#### D240

##### All Wheel Drive Automatic

The Ingenium 2.0 litre 4-cylinder 240PS Twin Diesel engine produces 500Nm of torque which improves upon performance whilst maintaining improved fuel economy.

- Series sequential twin turbochargers deliver an ideal combination of peak power performance and superior low-speed drivability.
- Upgrades include a higher pressure common rail fuel system, increased from 1,800 to 2,200 bar, and an increased fuel injector flow rate. These combine to deliver optimised fuel economy, emissions and power delivery.
- Continuously variable swirl control energises airflow at lower engine speeds and torques to improve diesel air-fuel mixing for improved combustion, with lower emissions and faster warm up.

## PETROL ENGINES

### P200

#### **All Wheel Drive Automatic**

The Ingenium 2.0 litre 4-cylinder 200PS Turbocharged Petrol engine offers improved fuel economy without compromising drivability.

- Direct fuel injection from centrally mounted solenoid injectors ensures precise delivery of fuel for highly efficient, clean combustion with low emissions.
- Intelligent Continuously Variable Valve Lift (CVVL) control manages inlet valve movement for optimal engine operation in all driving situations.
- Dual independent variable cam timing works in conjunction with CVVL to avoid valvetrain compromise, resulting in excellent power and fuel economy across the rev range.

### P250

#### **All Wheel Drive Automatic**

The Ingenium 2.0 litre 4-cylinder 249PS Turbocharged Petrol engine produces 365Nm of torque and delivers impressive fuel economy and drivability.

- The intelligent Continuously Variable Valve Lift (CVVL) system varies the extent to which inlet valves are opened, reducing engine pumping losses. This lets the engine 'breathe' with maximum efficiency, optimising power and torque.
- CVVL works in combination with dual independent variable cam timing for ultimate operating flexibility, resulting in excellent power and fuel economy across the rev range.
- For excellent acceleration and effortless overtaking, maximum torque is available between 1,200-4,500rpm.
- The twin scroll turbocharger is fed by an integrated exhaust manifold which increases the transfer of energy to the turbine - significantly reducing turbo lag and improving engine response.

### P300

#### **All Wheel Drive Automatic**

The high performance Ingenium 2.0 litre 4-cylinder 300PS Turbocharged Petrol engine features upgrades to the boosting system.

- Delivering a peak torque of 400Nm between 1,500-4,500rpm.
- The updated turbocharger features a high flow compressor wheel delivering 26 percent more air, enabling a peak power output of 300PS.
- The twin-scroll turbocharger features ceramic ball bearings which reduces friction and improves transient response.

# 3

## CHOOSE YOUR SPECIFICATION PACK

Configure your Range Rover Evoque at [landrover-me.com/newRangeRoverEvoque](https://landrover-me.com/newRangeRoverEvoque)

S



SE



HSE



R-DYNAMIC S



R-DYNAMIC SE



R-DYNAMIC HSE





	<b>S</b>	<b>SE</b>	<b>HSE</b>
<b>WHEELS</b>	<ul style="list-style-type: none"> <li>- 18" Style 5075, 5 split-spoke, Gloss Sparkle Silver</li> </ul> <p><b>When R-Dynamic is specified:</b></p> <ul style="list-style-type: none"> <li>- 18" Style 5074, 5 split-spoke, Gloss Sparkle Silver.</li> </ul>	<ul style="list-style-type: none"> <li>- 20" Style 5076, 5 split-spoke, Gloss Sparkle Silver</li> </ul> <p><b>When R-Dynamic is specified:</b></p> <ul style="list-style-type: none"> <li>- 20" Style 5079, 5 split-spoke, Gloss Sparkle Silver.</li> </ul>	<ul style="list-style-type: none"> <li>- 20" Style 5076, 5 split-spoke, Gloss Mid-Silver with contrast Diamond Turned finish</li> </ul> <p><b>When R-Dynamic is specified:</b></p> <ul style="list-style-type: none"> <li>- 20" Style 5079, 5 split-spoke, Gloss Dark Grey with contrast Diamond Turned finish.</li> </ul>
<b>EXTERIOR LIGHTING</b>	<ul style="list-style-type: none"> <li>- LED headlights.</li> </ul>	<ul style="list-style-type: none"> <li>- Premium LED headlights with signature DRL</li> <li>- Auto High Beam Assist (AHBA)</li> <li>- Front and Rear Animated Directional Indicators.</li> </ul>	<ul style="list-style-type: none"> <li>- Premium LED headlights with signature DRL</li> <li>- Auto High Beam Assist (AHBA)</li> <li>- Front and Rear Animated Directional Indicators.</li> </ul>
<b>CONVENIENCE</b>	<ul style="list-style-type: none"> <li>- Auto-dimming, power fold, heated door mirrors with approach lights</li> <li>- Auto-dimming interior rear view mirror</li> <li>- Manual tailgate.</li> </ul>	<ul style="list-style-type: none"> <li>- Auto-dimming, power fold, heated door mirrors with memory and approach lights</li> <li>- Auto-dimming interior rear view mirror</li> <li>- Powered tailgate.</li> </ul>	<ul style="list-style-type: none"> <li>- Auto-dimming, power fold, heated door mirrors with memory and approach lights</li> <li>- ClearSight interior rear view mirror</li> <li>- Powered gesture tailgate</li> <li>- Keyless Entry.</li> </ul>
<b>SEATING</b>	<ul style="list-style-type: none"> <li>- Perforated grained leather seats</li> <li>- 10-way electric front seats</li> </ul> <p><b>When R-Dynamic is specified:</b></p> <ul style="list-style-type: none"> <li>- Perforated Duo Tone grained leather seats.</li> </ul>	<ul style="list-style-type: none"> <li>- Perforated grained leather seats</li> <li>- 14-way electric memory front seats</li> </ul> <p><b>When R-Dynamic is specified:</b></p> <ul style="list-style-type: none"> <li>- Perforated Duo Tone grained leather seats.</li> </ul>	<ul style="list-style-type: none"> <li>- Perforated Windsor leather seats</li> <li>- 16-way electric memory front seats</li> <li>- Extended Leather Upgrade with leather steering wheel and Atlas bezel</li> </ul> <p><b>When R-Dynamic is specified:</b></p> <ul style="list-style-type: none"> <li>- Perforated Duo Tone Windsor leather seats</li> <li>- Perforated leather steering wheel with Atlas bezel.</li> </ul>
<b>INFOTAINMENT</b>	<ul style="list-style-type: none"> <li>- 10" Touch Pro</li> <li>- Analogue Dials with Central TFT Display</li> <li>- Sound System</li> <li>- Navigation Pro*</li> <li>- Connect Pro* consisting of Pro Services, Wi-Fi Hotspot and Smart Settings</li> <li>- Smartphone Pack* consisting of InControl Apps and Apple CarPlay®.</li> </ul>	<ul style="list-style-type: none"> <li>- Touch Pro Duo</li> <li>- Interactive Driver Display</li> <li>- Sound System</li> <li>- Navigation Pro*</li> <li>- Connect Pro* consisting of Pro Services, Wi-Fi Hotspot and Smart Settings</li> <li>- Smartphone Pack* consisting of InControl Apps and Apple CarPlay®.</li> </ul>	<ul style="list-style-type: none"> <li>- Touch Pro Duo</li> <li>- Interactive Driver Display</li> <li>- Meridian™ Sound System</li> <li>- Navigation Pro*</li> <li>- Connect Pro* consisting of Pro Services, Wi-Fi Hotspot and Smart Settings</li> <li>- Smartphone Pack* consisting of InControl Apps and Apple CarPlay®.</li> </ul>
<b>DRIVER ASSISTANCE</b>	<ul style="list-style-type: none"> <li>- Rear Camera.</li> </ul>	<ul style="list-style-type: none"> <li>- Rear Camera</li> <li>- Park Pack* consisting of Clear Exit Monitor, Park Assist, 360° Parking Aid and Rear Traffic Monitor.</li> </ul>	<ul style="list-style-type: none"> <li>- Rear Camera</li> <li>- Park Pack* consisting of Clear Exit Monitor, Park Assist, 360° Parking Aid and Rear Traffic Monitor</li> <li>- Drive Pack* consisting of Blind Spot Assist, Adaptive Cruise Control, High-speed Emergency Braking.</li> </ul>

# 4

## CHOOSE YOUR EXTERIOR

### SELECT YOUR ROOF

Choose from a metal roof, fixed panoramic or sliding panoramic roof, all of which enhance the sense of space in the vehicle's interior and flood it with natural light. The fixed panoramic roof provides uninterrupted views of the surrounding environment. The sliding panoramic roof opens fully to let the outside in. You can select either a body-coloured or contrast roof in Black or Silver to further enhance your vehicle's exterior. Any combination of metal, panoramic and contrast roof can be ordered.

Configure your Range Rover Evoque at [landover-me.com/newRangeRoverEvoque](https://landover-me.com/newRangeRoverEvoque)



Fixed Panoramic Roof  
optional



Sliding Panoramic Roof<sup>1</sup>  
optional



Body-coloured Metal Roof  
standard



Black Contrast Roof<sup>2</sup>  
optional



Silver Contrast Roof<sup>3</sup>  
optional

<sup>1</sup>Selecting sliding panoramic roof option will reduce front and rear headroom. <sup>2</sup>Not available with Santorini Black or Narvik Black exterior colours.

<sup>3</sup>Not available with Seoul Pearl Silver exterior colour. When contrast roof colour is selected, door mirrors are always in Narvik Black.

Options specified may affect vehicle efficiency and pricing due to local taxation policy. Please configure at [landover-me.com/newRangeRoverEvoque](https://landover-me.com/newRangeRoverEvoque) or check with your local Land Rover Retailer.

## SELECT YOUR PAINT COLOUR

Now you have chosen your preferred roof style, you can select your exterior paint colour. From rich, deep lustres to incandescent metallic patinas, our paints incorporate the latest in pigment technologies. Our solid paints produce a deep flat colour. Our optional metallics deliver a sparkle finish that is sure to catch the eye. And our optional Premium Metallic paints enhance both the colour and the intensity of the finish to give your vehicle even more presence.

### SOLID



Narvik Black



Fuji White

### METALLIC



Santorini Black



Eiger Grey



Indus Silver



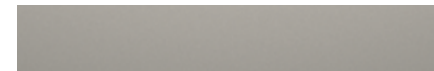
Yulong White



Kaikoura Stone



Firenze Red



Seoul Pearl Silver

### PREMIUM METALLIC



Carpathian Grey



Silicon Silver



### BLACK EXTERIOR PACK

Range Rover Evoque's remarkable looks can be enhanced further with the optional Black Exterior Pack. The bonnet and tailgate script, grille, side fender, front and rear bumper lower valance and mirror caps are all finished in Gloss Black for an assertive appearance.

### R-DYNAMIC BLACK EXTERIOR PACK

For an even more striking look, the optional R-Dynamic Black Exterior Pack builds upon the Range Rover Evoque Black Exterior Pack with the addition of a Gloss Black finish to the bonnet louvres and exhaust finishers - taking the vehicle's distinctive exterior to new heights.



Gloss Black grille with Gloss Black surround



Body-coloured front bumper with Gloss Black valance



Gloss Black side vents



Gloss Black exhaust finishers

## SELECT YOUR WHEELS

There are 12 wheel styles to choose from. Sizes range from 17" to the highly desirable 21".  
With distinctive design cues, each one adds its own character to the overall look of the vehicle.

Configure your Range Rover Evoque at [landover-me.com/newRangeRoverEvoque](http://landover-me.com/newRangeRoverEvoque)



**17" STYLE 1005**  
**10 SPOKE**  
**SATIN DARK GREY**  
Standard on Range Rover Evoque<sup>1</sup>



**17" STYLE 5073**  
**5 SPLIT-SPOKE**  
**SATIN DARK GREY<sup>1</sup>**  
Standard on Range Rover Evoque R-Dynamic



**18" STYLE 5075**  
**5 SPLIT-SPOKE**  
**GLOSS SPARKLE SILVER**  
Standard on Range Rover Evoque<sup>2</sup>  
and Range Rover Evoque S



**18" STYLE 5074**  
**5 SPLIT-SPOKE**  
**GLOSS SPARKLE SILVER**  
Standard on Range Rover Evoque R-Dynamic<sup>2</sup>  
and Range Rover Evoque R-Dynamic S



**20" STYLE 5076**  
**5 SPLIT-SPOKE**  
**GLOSS SPARKLE SILVER**  
Standard on Range Rover Evoque SE



**20" STYLE 5076**  
**5 SPLIT-SPOKE**  
**GLOSS MID-SILVER WITH**  
**CONTRAST DIAMOND TURNED FINISH**  
Standard on Range Rover Evoque HSE

<sup>1</sup>Standard on D150, D180 and P200 engines. <sup>2</sup>Standard on D240, P250 and P300 engines. <sup>3</sup>Only available with Adaptive Dynamics. Not available on D150 engine.

<sup>4</sup>Only available on First Edition with Adaptive Dynamics. Not available on D150 engine. Please check with your local Land Rover Retailer for availability.

Options specified may affect vehicle efficiency and pricing due to local taxation policy. Please configure at [landover-me.com/newRangeRoverEvoque](http://landover-me.com/newRangeRoverEvoque) or check with your local Land Rover Retailer.



**20" STYLE 5079**  
**5 SPLIT-SPOKE**  
**GLOSS SPARKLE SILVER**  
Standard on Range Rover Evoque R-Dynamic SE



**20" STYLE 5079**  
**5 SPLIT-SPOKE**  
**GLOSS DARK GREY WITH**  
**CONTRAST DIAMOND TURNED FINISH**  
Standard on Range Rover Evoque R-Dynamic<sup>1</sup> HSE  
and First Edition



**20" STYLE 5079**  
**5 SPLIT-SPOKE**  
**GLOSS BLACK**



**21" STYLE 5078**  
**5 SPLIT-SPOKE**  
**GLOSS SILVER<sup>2</sup>**



**21" STYLE 5078**  
**5 SPLIT-SPOKE**  
**GLOSS BLACK<sup>3</sup>**



**21" STYLE 5077**  
**5 SPLIT-SPOKE**  
**GLOSS LIGHT SILVER WITH**  
**CONTRAST DIAMOND TURNED FINISH<sup>4</sup>**

# 5

## CHOOSE YOUR INTERIOR

Now you have chosen your model, you can select the perfect combination of interior colours.

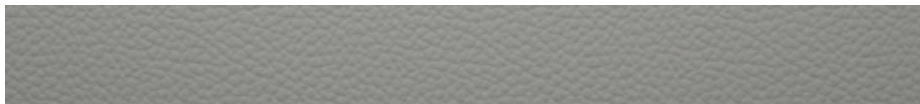
Configure your Range Rover Evoque at [landrover-me.com/newRangeRoverEvoque](http://landrover-me.com/newRangeRoverEvoque)

### SELECT YOUR COLOUR COMBINATION

#### RANGE ROVER EVOQUE



Ebony



Cloud



Eclipse

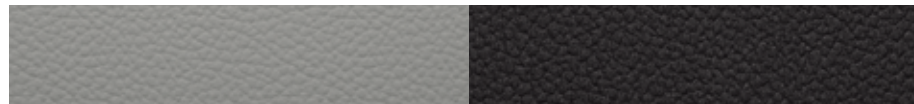


Deep Garnet

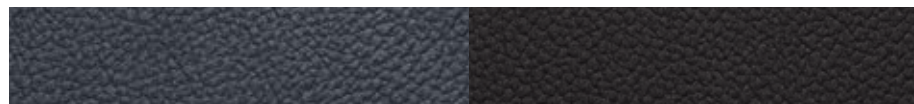
#### RANGE ROVER EVOQUE R-DYNAMIC



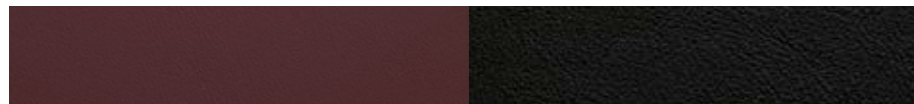
Ebony



Cloud/Ebony



Eclipse/Ebony



Deep Garnet/Ebony



## SELECT YOUR SEAT MATERIAL



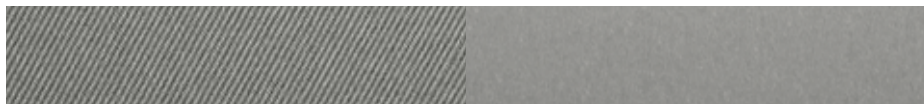
Fabric



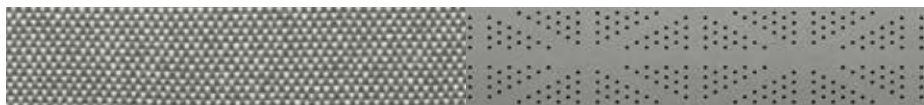
Perforated grained leather



Perforated Windsor leather



Eucalyptus textile and Ultrafabrics™

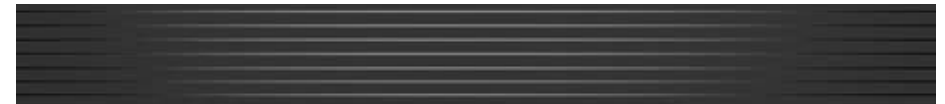


Kvadrat premium textile and Dinamica® suedecloth

## SELECT YOUR INTERIOR FINISHER



Gradated Linear Bright Aluminium trim finisher<sup>1</sup>



Gradated Linear Dark Aluminium trim finisher<sup>2</sup>



Natural Grey Ash veneer (optional)



Natural Umber Ash veneer (optional)

<sup>1</sup>Standard on Range Rover Evoque, optional on Range Rover Evoque R-Dynamic.

<sup>2</sup>Standard on Range Rover Evoque R-Dynamic, optional on Range Rover Evoque.

Not all seat materials are available in all colourways. For more details, please refer to the accompanying Specification and Price Guide.

## SELECT AN INTERIOR DESIGN PACK

To add additional touches of individuality, sophistication and comfort to your cabin space, you can choose from four interior design packs.

### EXTENDED LEATHER UPGRADE



Standard with Windsor leather seats or Kvadrat premium textile and Dinamica® suedecloth seats, this pack includes:

- Windsor leather on the mid instrument panel and door top roll lowers
- Leather steering wheel with Atlas bezel

### FULL EXTENDED LEATHER UPGRADE



Optional with Windsor leather seats or Kvadrat premium textile and Dinamica® suedecloth seats, this pack includes:

- Windsor leather on the mid instrument panel, instrument panel topper, door top roll uppers and lowers
- Leather steering wheel with Atlas bezel

EUCALYPTUS TEXTILE PACK



Optional with Eucalyptus textile and Ultrafabrics™ seats, this pack includes:

- Luxtec on the mid instrument panel and door top roll lowers
- Suedecloth steering wheel\*
- Suedecloth SportShift Selector

PREMIUM TEXTILE PACK



Optional with Kvadrat premium textile and Dinamica® suedecloth seats, this pack includes:

- Luxtec on the mid instrument panel and door top roll lowers
- Suedecloth steering wheel with Atlas bezel\*
- Suedecloth SportShift Selector

\*Not available with heated steering wheel.

# 6

## CHOOSE YOUR OPTIONS AND LAND ROVER GEAR

### SELECT YOUR OPTIONS

A wealth of line-fit options are available to select from at the point of ordering your new vehicle to help you express your individuality and appoint your Range Rover Evoque with the premium features you require. Features and their availability may differ by vehicle specification and market. For full feature and option availability please refer to the accompanying Specification and Price Guide or visit your local Land Rover Retailer.

Configure your Range Rover Evoque at [landrover-me.com/newRangeRoverEvoque](https://landrover-me.com/newRangeRoverEvoque)



## EXTERIOR FEATURES

Headlights and lighting - see page 43  
Privacy glass<sup>1</sup>  
Solar attenuating windscreen.

## WHEELS AND TYRES

Summer tyres  
Locking wheel nuts.

## INTERIOR FEATURES

Configurable Ambient Interior Lighting  
Cold Climate Convenience Pack consisting of heated windscreen, heated washer jets and heated steering wheel<sup>2</sup>  
Electrically adjustable steering column  
Morzine headlining (Light Oyster or Ebony)  
Suedecloth headlining (Light Oyster or Ebony)  
Air Quality Sensor  
Cabin Air Ionisation - see page 47  
Cabin pre-conditioning with remote<sup>1</sup>  
Carpet mats  
Premium carpet mats  
Illuminated metal treadplates with Range Rover script (R-Dynamic script on R-Dynamic vehicles)  
Chrome treadplates  
8-way manual front seats<sup>3</sup>  
10-way electric front seats<sup>4</sup>  
14-way electric memory front seats<sup>4,5</sup>  
16-way electric memory front seats<sup>6</sup>  
Heated front seats  
Heated front and rear seats  
Heated and cooled front seats with heated rear seats<sup>6,7</sup>  
Massage front seats<sup>6,7</sup>.

## INFOTAINMENT

Infotainment - see page 23  
Connectivity - see pages 25-29  
Audio - see pages 30-31  
Digital TV<sup>1</sup>.

## TECHNOLOGY

Wade Sensing - see page 19  
Adaptive and Configurable Dynamics - see page 21  
360° Surround Camera - see page 35  
Drive Pack and Park Pack - see pages 36-37  
Keyless Entry  
Activity Key - see page 47  
Intrusion sensor.

## CONVENIENCE

Powered tailgate  
Powered gesture tailgate - see page 44  
Garage Door Opener (HomeLink<sup>®</sup>)<sup>8</sup>  
ClearSight interior rear view mirror - see page 34  
Power Socket Pack 2  
Loadspace partition net  
Loadspace storage rails  
Click and Go integrated base unit - see page 47.

<sup>1</sup>Market dependent. <sup>2</sup>Only available with leather steering wheel. <sup>3</sup>Only available with fabric seats. <sup>4</sup>Only available with grained leather seats or Eucalyptus textile and Ultrafabrics™ seats. <sup>5</sup>Only available with auto-dimming, power fold, heated door mirrors with memory and approach lights. <sup>6</sup>Only available with Windsor leather seats or Kvadrat premium textile and Dinamica® suedecloth seats, and auto-dimming, power fold, heated door mirrors with memory and approach lights. <sup>7</sup>Only available with 16-way seats. <sup>8</sup>Only available with auto-dimming interior rear view mirror or ClearSight interior rear view mirror. Market dependent.

## SELECT YOUR LAND ROVER GEAR – ACCESSORIES

A range of stylish, tough and practical accessories are available, bringing you the opportunity to personalise your Range Rover Evoque even further. These accessories can be purchased through your local Land Rover Retailer and added at any stage during the vehicle's life - not just when it's new. Naturally, Land Rover Approved Accessories are designed, tested and manufactured to the same exacting standards as the original equipment fitted to your vehicle.

For more information and a complete list of options and Land Rover Gear, configure your Range Rover Evoque at [landrover-me.com/newRangeRoverEvoque](https://landrover-me.com/newRangeRoverEvoque) and [gear.landrover.com](https://gear.landrover.com)



## TOURING

### Cross Bars (without roof rails)

Aerodynamic profile minimises drag and wind noise. The incremental height when fitted is 93mm.

### Luggage Roof Box<sup>1,2</sup>

Power-click quick mounting system with integrated torque indicator for easy and secure fixation with a single-handed grip. Opens from both sides with handles on the lid and inside the box, for convenient fitting, loading and unloading. Integrated base mat for extra secure loading. Load capacity eight skis/five-six snowboards, max length of skis 205cm. Volume 410 litres. Maximum payload 75kg<sup>3</sup>.

### Tow Bar Mounted Bike Carrier - 3 Bike

The tow bar mounted bike carrier features a one hand, quick attach/release tow bar coupling mechanism and can be tilted away from the vehicle, by use of a foot pedal, to allow easy access into the rear tailgate. The tailgate can be opened with carrier in deployed/folded position. Manufactured from aluminium and other lightweight materials, the bike carrier also features a rear lighting and licence plate mount and it is lockable for security.

The carrier has a folding/sliding mechanism to allow ease of stowage when not in use. A holder and ratchet function ensure bicycles are safely secured. Maximum load capacity 51kg.

### Seatback Stowage - Premium Leather

Manufactured from the same Premium leather offered on the vehicle, complemented with soft-touch interior lining and magnetic button clasps. Provides a convenient stowage solution for the rear of the front seats with multiple compartments for stowing small items.

### Click and Go - Range

The Click and Go range is a multi-purpose seat-back system for second row passengers. The versatile Click and Go base fixes between the headrest mountings and further attachments can be added to hold tablets, bags and shirts or jackets. Each attachment is sold separately. The base can be easily removed when not in use.



Click and Go System - including Base and Click and Hang



Tow Bar Mounted Bike Carrier - 3 Bike

<sup>1</sup>Cross bars are required for all Land Rover roof mounted accessories. Objects placed above the roof mounted satellite antenna may reduce the quality of the signal received by the vehicle and could have a detrimental effect on the navigation and satellite radio system, if fitted. <sup>2</sup>Not available with sliding panoramic roof. <sup>3</sup>Maximum payload equals the load capacity of the roof mounted accessory.

---

## DESIGN

---

### Stainless Steel Undershield - Front<sup>1</sup>

The off-road inspired undershield, manufactured from stainless steel, features a premium Bright Polished finish for the front of the vehicle.

### Centre Cap - Silver Finish

Enhances and adds style to alloy wheels. Features Land Rover logo.

### Loadspace Treadplate Finisher - Illuminated

Manufactured from stainless steel with a Bright finish, the trunk finisher provides protection to the loadspace trim when loading or unloading and provides a premium finish to the loadspace with subtle illumination.

### Side Vents - Narvik Black

Narvik Black side vents provide a subtle exterior design enhancement.

### Mirror Covers - Carbon Fibre

Stunning high grade Carbon Fibre mirror covers, with a High Gloss finish, provide a performance-inspired premium styling update.

### Sport Pedal Covers

Stainless steel Bright finish sport pedal covers are easy to fit and feature hidden fixings for a clean finish.

### Gearshift Paddles - Aluminium<sup>2</sup>

Complete the look and feel of your steering wheel with premium aluminium paddles. Gearshift paddles are machine polished, anodised and hand brushed to provide exceptional wear resistance with a premium finish.

### Sill Treadplates - Illuminated, Front

Driver and passenger's front door sill treadplates add style to the vehicle and protect the sill trim from scuffs and scrapes. Co-ordinates with your vehicle's interior and subtly illuminates Range Rover script when the front doors are open.



Stainless Steel Undershield - Front

---

## PET PRODUCTS

---

### Loadspace Liner Tray and Luggage Divider Full Height

Combines the loadspace rubber mat with the full height partition, to protect both your vehicle and your pet. The rubber mat is waterproof, protecting the vehicle's loadspace floor carpet. The full height partition prevents access to the passenger compartment, while safely containing and protecting your pet.

### Spill Resistant Pet Bowl

Provides a convenient solution for use in transit or outside of the vehicle. With an anti-slip rubber base and a retention strap for securing to the loadspace 'D' loop, the spill resistant bowl has a capacity of 350ml.

### Portable Rinse System

Designed to be used outside the vehicle, the portable rinse system provides a convenient solution for washing pets before loading or rinsing other equipment from bikes to wetsuits. Depending on the setting selected, this portable rinse system will deliver a minimum of two minutes of continuous water flow through a shower hose style attachment. Without the need for batteries or external power, the system utilises pressure captured when filling from a tap, and an integrated hand pump allows the user to pressurise if filling the water tank away from home. Featuring a Land Rover branded cover and handle, with an additional stowage bag it can be secured to the loadspace 'D' loops during transit.

### Foldable Pet Carrier

The Foldable Pet Carrier provides a safe, comfortable environment for the transportation of pets. Manufactured from a durable 600D nylon, the Foldable Pet Carrier has a lightweight metal frame and includes a quilted fabric cushion, net windows and a spring loaded locking mechanism which snaps into place when required. Windsor leather carry handles and corner pieces provide a premium finish, with a side pocket providing a convenient stowage option for other pet accessories or small items.

### Quilted Loadspace Liner

This tailored liner protects all the carpeted areas of the loadspace area including the floor, second row seat backs and side walls. Manufactured from a soft quilted fabric with an integral rubber mat and detachable bumper protector it is easy to wipe clean, making it ideal for owners who regularly carry pets in the loadspace of their vehicle.



Foldable Pet Carrier

---

<sup>1</sup>Not available on R-Dynamic vehicles. <sup>2</sup>Automatic Transmission only.



## OUTDOOR

### Electrically Deployable Tow Bar

The electrically deployable tow bar is stowed discreetly behind the rear bumper when not in use, providing a clean, attractive finish. It is designed to deploy or stow in 12 seconds and is operated via a switch in the rear loadspace or by the infotainment system in the cabin. Returns to original position if any obstructions encountered during deploying/stowing. Includes integral 13 pin towing electrics (also hidden until deployed). Approved for up to 1,500kg trailer load. Includes a unique trailer light test facility which allows the driver to be able to check without assistance if the trailer lights, including reverse and brake lights, are functioning correctly. The trailer light test is activated via either a switch in the loadspace or via the Touchscreen, depending on the vehicle's specification.

### Mudflaps

#### - Front

#### - Rear

Mudflaps are a popular upgrade for reducing spray and ensuring paintwork is protected from debris and dirt. Designed to complement the vehicle's exterior styling.

### Loadspace Protection Rubber Mat

Black, waterproof loadspace rubber mat with retaining lip. Offers protection of the loadspace floor.

### Protective Rear Seat Cover

Protects both the rear seat bench and door linings from wet and dirt.

### Rubber Floor Mats

Land Rover branded waterproof rubber mat, with retaining lip, helps to protect the rear loadspace carpet from general dirt. This waterproof mat extension covers the back of the rear seats when they are folded down.

### Loadspace Retention Kit

The loadspace retention kit consists of a pack of attachments that fix into the loadspace rails via a quick lock/quick release system to help provide a comprehensive and flexible solution for retaining luggage and other items within the loadspace. The Attachment Pack includes a retractable strap with inertia reel and telescopic rod.



Electrically Deployable Tow Bar

## LIFESTYLE

### iPhone Connect and Charge Dock

The iPhone Connect and Charge Dock has been designed to allow visibility of the phone whilst charging, utilising the cup holder space in the central console. When connected, the iPhone media is accessible and has the ability to be controlled via the integrated infotainment/audio system. The 'cut-out' design of the holder is such that home button is also accessible for use when parked. The iPhone USB charger can be easily disconnected if the USB connection is required for other use.

### Land Rover Branded Child Seat - ISOFIX Base

ISOFIX base for use with the child seat - Group 0+ (birth - 13kg)  
- infant carrier VPLRS0397.

### Land Rover Branded Child Seat - Group 0+

For babies from birth - 13kg (approximately birth - 12-15 months). Land Rover branded. Rearward facing on rear seat. Includes a wind/sun canopy and padded, machine washable cover. An easy, height adjustable headrest and a five-point harness with one-pull adjustment. Can be installed with the vehicle's three-point seat belt or the child seat ISOFIX base. Approved to European test standard ECE R44-04.

### Rear Bumper Protection Cover

Provides protection for the rear bumper from scuffs and scratches and helps to prevent clothing from collecting dirt when loading and unloading.

### Second Row Armrest Food Warmer/Chiller

Food and drinks chiller and warmer that acts as a rear centre armrest. With a leather-covered top, it is held in place by the centre seat belt and powered from the rear auxiliary socket. Ideal for long journeys with the family.

### Windscreen Sun Shield

UV windscreen sun shield reflects the sun's rays and helps to keep the vehicle interior cool in hot weather.

### Electric Cool Bag

This cool bag is thermostatically temperature controlled, is powered by the 12 volt auxiliary socket and has an easy to clean interior surface. Height 380mm, length 380mm, width 220mm. Volume 14 litres.



iPhone Connect and Charge Dock

# THE WORLD OF LAND ROVER

Your Land Rover has been designed and engineered to help you make more of your world. It can take you to places other vehicles simply can't reach in a style that cannot be matched. To celebrate the Land Rover lifestyle, we've put together a range of experiences, publications and the Land Rover Lifestyle Collection. There's a world to explore. Get out there and enjoy it.

## EXPERIENCE DRIVES



Bring out your adventurous side and experience Land Rover's legendary capability for yourself. Under the expert guidance of a world-class instructor, head to the most exciting and challenging off-road terrains and take the vehicle to its limits.

[landrover-me.com/experiences](https://landrover-me.com/experiences)

## ADVENTURE TRAVEL



From the sheer exhilaration of the Arctic ice to the awe-inspiring dunes of Namibia, Land Rover Adventure Travel offers you once-in-a-lifetime experiences that bring the spirit and emotion of our vehicles to life.

[landrover-me.com/experiences/adventure-travel](https://landrover-me.com/experiences/adventure-travel)

Follow us on:



## MANUFACTURING TOURS



This is a unique opportunity to step inside our state-of-the-art manufacturing facilities and see where the latest vehicles are born. Taking you behind the scenes, our expert tour guides will show you how Land Rover combines unrivalled craftsmanship with cutting-edge robotics.

[landrover.com/tours](https://landrover.com/tours)

## SPECIAL VEHICLE OPERATIONS



Whether it's class-leading luxury, thrilling performance or extreme all-terrain capability, Land Rover excels. Special Vehicle Operations takes this even further. Delivering the absolute pinnacle of Land Rover engineering and design, each vehicle combines peerless refinement with power and cutting-edge technology, which is why the SV badge represents so much.

[landrover-me.com/special-vehicle-operations/special-vehicles](https://landrover-me.com/special-vehicle-operations/special-vehicles)

## THE LAND ROVER LIFESTYLE COLLECTION



Our latest range of clothing and lifestyle accessories are crafted with the same design excellence and attention to detail as our vehicles. Inspired by our unique heritage, there is something for the whole family.

[landrover-me.com/branded-goods](http://landrover-me.com/branded-goods)

## ONELIFE MAGAZINE



Free twice a year for your first three years as a Land Rover owner, this award-winning magazine features the best in photography, authoritative journalism and expert insights. Onelife takes you right into the heart of exclusive experiences and extraordinary adventures, whilst keeping you up to date with the latest innovations, design and lifestyle choices.

[landrover.com/onelife](http://landrover.com/onelife)

Follow us on:



## BRAND PARTNERSHIPS



Integrity. Courage. Pride. These are the values that Land Rover shares with its partners. Whether it's the Invictus Games, Virgin Galactic, Rugby World Cup 2019™ or the British and Irish Lions, each one is driven by exceptional people. Those who push their capabilities to the very limits and champion the determination to go above and beyond.

[landrover-me.com/experiences/sponsorship](http://landrover-me.com/experiences/sponsorship)

## HUMANITARIAN PARTNERSHIPS



Since 1954, Land Rover is proud to have supported the incredible humanitarian work of the International Federation of Red Cross and Red Crescent Societies (IFRC). Through vehicles, funding and combined expertise, this ambitious global partnership has helped to transform the lives of over one million people, across four continents.

[landrover-me.com/explore-land-rover/responsibility](http://landrover-me.com/explore-land-rover/responsibility)



# YOUR PEACE OF MIND

## CUSTOMER SERVICE

When you bring your Land Rover to us, we use cutting-edge diagnostic equipment to assess all your vehicle's mechanical and electronic systems. Our qualified Technicians use tools specifically designed for our vehicles and only fit genuine Land Rover parts and Gear accessories. A choice of service plans are available which, together with Roadside Assistance, ensures complete peace of mind.

**For further details contact your local Land Rover Retailer or search 'Land Rover Ownership'.**

## LAND ROVER ROADSIDE ASSISTANCE

Land Rover Assistance provides assistance in motoring emergencies, from immobilisation due to breakdown or accident to minor problems such as punctures. You can rely on our roadside assistance, whatever the situation, wherever you happen to be.

**For further details please consult your Warranty Benefits handbook, contact your nearest Land Rover Approved Service Centre or search 'Land Rover Roadside Assistance'.**

**IMPORTANT NOTICE:** Jaguar Land Rover Limited is constantly seeking ways to improve the specification, design and production of its vehicles, parts and accessories and alterations take place continually. Whilst every effort is made to produce up to date literature, this brochure should not be regarded as an infallible guide to current specifications or availability, nor does it constitute an offer for the sale of any particular vehicle, part or accessory. Distributors and retailers are not agents of Jaguar Land Rover Limited by any express or implied undertaking or representation.

The colours reproduced here are subject to the limitations of the printing process and may therefore vary slightly from the actual vehicle. The company reserves the right to alter or withdraw any colour finish without notice. Some of these colours may not be obtainable in your country. Please check availability of colours and current specifications with your Land Rover Retailer. Distributors and retailers are not agents of Jaguar Land Rover Limited and have absolutely no authority to bind Jaguar Land Rover Limited to any express or implied undertaking or representation.

## TECHNICAL SPECIFICATION

If not enclosed, please contact your local Land Rover Retailer.

## LAND ROVER FINANCIAL SERVICES

Getting the keys to your very own Land Rover has never been so simple. And it's more affordable than you might think. New or used, for personal or business use, we have an option that puts you in complete control.

**For further details contact your local Land Rover Retailer or search 'Land Rover Finance'.**

## FLEET & BUSINESS

Land Rover is dedicated to being the premium manufacturer of choice for fleets and businesses, by providing a highly attractive range of vehicles and exemplary customer service. Distinctive, capable and versatile, all Land Rover vehicles deliver low Total Cost of Ownership through strong residual values, competitive service, maintenance and repair costs, and impressive fuel economy and CO<sub>2</sub> emissions.

We are also committed to providing a totally customer-focused aftersales service, which will ensure every Land Rover vehicle is kept on the road and in top condition, in the easiest and most cost-efficient way for businesses.

**Search 'Land Rover Fleet and Business' for full details.**

Information and images displayed in relation to the InControl technology, including Touchscreen, App screens, or sequences are subject to regular software updates, version control and other system/ visual changes depending on options selected.

Castrol EDGE Professional exclusively recommended by Land Rover.

Vehicle shown left is First Edition in Nolita Grey with optional 21" wheels fitted.

Vehicle shown on front and back cover is First Edition in Nolita Grey with optional 21" wheels fitted.

### **Jaguar Land Rover Limited**

Registered Office: Floor 7, Wing E, HQ Building,  
Dubai Silicon Oasis, P.O. Box 32588, Dubai UAE.

Registered in England: Number 1672070

[landrover-me.com/newRangeRoverEvoque](http://landrover-me.com/newRangeRoverEvoque)

© Copyright Jaguar Land Rover Limited 2019.

1L5512030000BXMEN01P





# NEW RANGE ROVER EVOQUE

TECHNICAL SPECIFICATION

SEPTEMBER 2019



ABOVE & BEYOND



# ENGINES

You can select from a choice of 2.0 litre diesel\* or petrol Ingenium engines. These engines are designed for clean and efficient combustion and are all equipped with Stop/Start technology.

Configure your Range Rover Evoque at [landrover-me.com/newRangeRoverEvoque](http://landrover-me.com/newRangeRoverEvoque)

## TECHNICAL SPECIFICATION

POWERTRAIN	DIESEL						PETROL					
	D150		D180		D240		P200		P250		P300	
Mild Hybrid Electric Vehicle (MHEV)*	■		■		■		-		-		■	
Transmission	Automatic		Automatic		Automatic		Automatic		Automatic		Automatic	
Driveline	All Wheel Drive (AWD)		All Wheel Drive (AWD)		All Wheel Drive (AWD)		All Wheel Drive (AWD)		All Wheel Drive (AWD)		All Wheel Drive (AWD)	
Maximum power (PS/rpm)	150/4,000		180/4,000		240/4,000		200/5,500		249/5,500		300/5,500	
Maximum torque (Nm/rpm)	380/1,750 - 2,500		430/1,750 - 2,500		500/1,500 - 2,500		320/1,250 - 4,500		365/1,300 - 4,500		400/1,500 - 4,500	
Capacity (cc)	1,999		1,999		1,999		1,997		1,997		1,997	
No. of cylinders/ Valves per cylinder	4/4		4/4		4/4		4/4		4/4		4/4	
Cylinder layout	Transverse		Transverse		Transverse		Transverse		Transverse		Transverse	
Bore/stroke (mm)	83/92.4		83/92.4		83/92.4		83/92.3		83/92.3		83/92.3	
Compression ratio (:1)	15.5		15.5		15.5		10.5		10.5		9.5	
<b>FUEL ECONOMY - NEDC EQUIVALENT (NEDC2)**</b>	<b>Class A</b>	<b>Class B</b>	<b>Class A</b>	<b>Class B</b>	<b>Class A</b>	<b>Class B</b>	<b>Class A</b>	<b>Class B</b>	<b>Class A</b>	<b>Class B</b>	<b>Class A</b>	<b>Class B</b>
NEDC2 Consumption	Urban	l/100km	6.3	-	6.5	6.7	7.0	7.3	-	-	10.3	10.6
	Extra Urban	l/100km	4.8	-	5.0	5.1	5.3	5.5	-	-	7.0	7.1
	Combined	l/100km	5.4	-	5.5	5.7	5.9	6.2	7.7 <sup>†</sup>	-	7.9 <sup>†</sup>	8.4
NEDC2 CO <sub>2</sub> Emissions	Urban	g/km	167	-	171	175	184	191	-	-	234	241
	Extra Urban	g/km	127	-	130	134	140	145	-	-	158	162
	Combined	g/km	142	-	145	149	156	162	176 <sup>†</sup>	-	180 <sup>†</sup>	185
<b>FUEL ECONOMY</b>												
Fuel tank capacity - useable litres	Large tank		65		65		65		67		67	
Diesel Exhaust Fluid (DEF)* - useable litres	Large tank		17		17		17		-		-	
Selective Catalytic Reduction Filter/ Gasoline Particulate Filter (SCR/GPF)			■		■		■		■		■	

■ Standard - Not Available.

Class A (17" - 20" wheel) Class B (21" wheel)

\*Market dependent. \*\*The figures provided are NEDC2 calculated from official manufacturer's WLTP tests in accordance with EU legislation. For comparison purposes only. Real world figures may differ. CO<sub>2</sub> and fuel economy figures may vary according to wheel fitment and optional extras fitted. NEDC2 are figures calculated using a Government formula from WLTP figures equivalent to what they would have been under the old NEDC test. The correct tax treatment can then be applied. <sup>†</sup>All figures are manufacturer's targets and subject to final confirmation ahead of production. Note that CO<sub>2</sub> and fuel economy figures can vary according to wheel fitment, and the lowest figures may not be achievable with the standard wheels.

## TECHNICAL SPECIFICATION

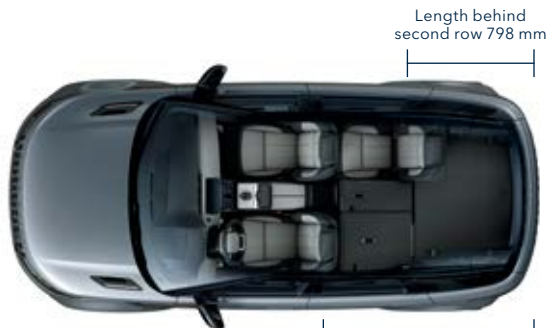
PERFORMANCE	DIESEL			PETROL		
	D150	D180	D240	P200	P250	P300
Acceleration (secs) 0-100 km/h	11.2	9.3	7.7	8.5	7.5	6.6
Maximum speed km/h	196	205	225	216	230	242
<b>BRAKES</b>						
Front type	Single piston, sliding caliper. Lightweight discs	Single piston, sliding caliper. Lightweight discs	Opposed piston caliper. Lightweight discs	Single piston, sliding caliper. Lightweight discs	Opposed piston caliper. Lightweight discs	Opposed piston caliper. Lightweight discs
Front diameter (mm)	325 (17" wheels) 349 (18"- 20" wheels)	325 (17" wheels) 349 (18"- 21" wheels)	349	325 (17" wheels) 349 (18"- 21" wheels)	349	349
Rear type	Single piston, sliding caliper. Lightweight discs	Single piston, sliding caliper. Lightweight discs	Single piston, sliding caliper. Lightweight discs	Single piston, sliding caliper. Lightweight discs	Single piston, sliding caliper. Lightweight discs	Single piston, sliding caliper. Lightweight discs
Rear diameter (mm)	300	300	325	300	300	325
Park Brake diameter (mm)	300	300	325	300	300	325
<b>WEIGHTS (kg)<sup>‡</sup></b>						
Unladen weight (EU) <sup>‡</sup>	1,891	1,891	1,955	1,813	1,862	1,925
Unladen weight (DIN) <sup>§</sup>	1,816	1,816	1,880	1,738	1,787	1,850
Gross Vehicle Weight (GVW)	2,490	2,490	2,510	2,430	2,430	2,450
<b>TOWING (kg)</b>						
Unbraked trailer	750	750	750	750	750	750
Maximum towing	Up to 2,000	Up to 2,000	Up to 2,000	Up to 1,800	Up to 1,800	Up to 1,800
Maximum coupling point (nose weight)	100	100	100	100	100	100
Maximum vehicle and trailer combination	4,490	4,490	4,510	4,230	4,230	4,250
<b>ROOF CARRYING (kg)</b>						
Maximum roof load (including cross bars)	75	75	75	75	75	75

<sup>‡</sup>Weights reflect vehicles to standard specifications. Optional extras increase weight. <sup>‡</sup>Includes a 75kg driver, full fluids and 90% fuel. <sup>§</sup>Includes full fluids and 90% fuel.

# DIMENSIONS AND CAPABILITIES



Wheelbase 2,681mm



Length behind second row 798 mm

Loadspace Width 1,301mm

Length behind first row 1,576mm



Overall length 4,371mm

## Headroom

Maximum front / rear headroom with standard roof 989mm / 973mm

Maximum front / rear headroom with panoramic roof 1,013mm / 997mm

## Legroom

Maximum front legroom 1,016mm

Maximum rear legroom 859mm

## Loadspace Capacity

Height 691mm, Width 1,301mm

Loadspace width between arches 1,053mm

Maximum loadspace volume behind first row

Dry\* 1,156 litres, Wet\*\* 1,383 litres

Maximum loadspace volume behind second row

Dry\* 472 litres, Wet\*\* 591 litres

## Turning Circle

Kerb-to-kerb 11.6m

Wall-to-wall 11.9m

Turns lock-to-lock 2.3

## Wading Depth

Maximum wading depth 600mm

Width 1,996mm mirrors folded  
Width 2,100mm mirrors out

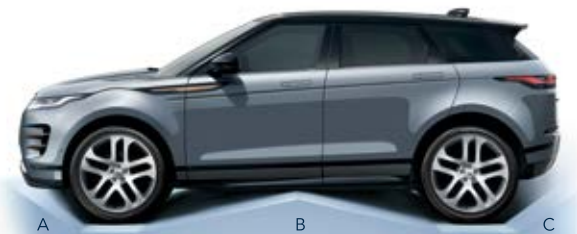


Front wheel track 1,626mm<sup>†</sup>

Height 1,649mm



Rear wheel track 1,632mm/1,631mm<sup>†</sup>



	A	B	C
Ground Clearance	212mm	22.2°/19.5° <sup>‡</sup>	20.7°
Approach Angle			30.6°
Ramp Angle			
Departure Angle			



\*Dry: Volume as measured with VDA-compliant solid blocks (200mm x 50mm x 100mm). \*\*Wet: Volume as measured by simulating the loadspace filled with liquid. <sup>†</sup>When 17" Summer Tyres are fitted. <sup>‡</sup>R-Dynamic models only.